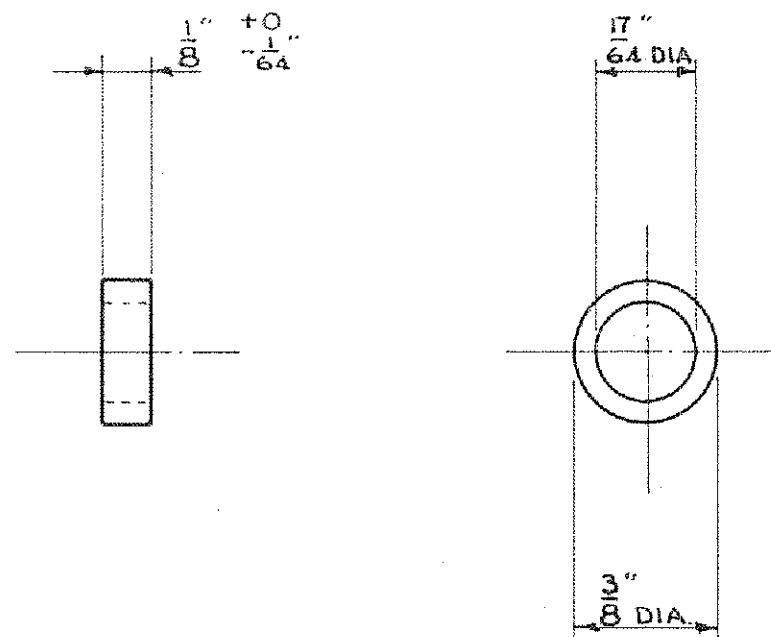


### A3 Drawings Index Sheet - Electrical

Page No.	Drawing Number	Drawing Title
2	546 - 96	Insulating bush
3	546 - 107	Insulating bush
4	3046 - 27	Bottom cover plate
5	3046 - 28	Insulating block
6	3046 - 29	Contact spring
7	3046 - 30	Contact plate assembly
8	3046 - 31	Bolt - auxiliary starter socket
9	3046 - 32	Casing - auxiliary starter socket
10	3046 - 33	Moveable contact assembly
11	3046 - 34	Guide block
12	3046 - 35	Insulating strip
13	3046 - 36	Stop - auxiliary starter socket
14	3046 - 37	Contact screw
15	3046 - 38	Spring - auxiliary starter socket
16	3046 - 39	Insulating block
17	3046 - 40	Top cover plate
18	3046 - 41	Insulating strip
19	3046 - 42	Contact set screw
20	3046 - 76	Hinge spring
21	3046 - 89	Fixed contact assembly
22	3046 - 122	Contact plate
23	3049 - 186	Lid - auxiliary starter socket
24	3049 - 208	Ruby holder
25	3049 - 252	Lid - rear lamp casing
26	3049 - 257	Stop light shroud assembly
27	3049 - 258	Glass holder
28	3049 - 288	Starter switch assembly
29	3049 - 1091	Insulating disc
30	3049 - 1625	Hinge pin - auxiliary starter socket bracket
31	22112 - 816/7	Budget lock assembly
32	RT.035.D3	Door for speedometer casing
33	RT.035.D4	Door hinge rod - speedometer casing
34	RT.035.D5	Spring pin - speedometer casing
35	RT.035.D6	Spring - speedometer casing
36	RT.035.D8	Spring pin - hinge arm
37	RT.070.L2	Plunger bracket
38	RT.071.L1	Plunger assembly
39	RT.071.L2	Plunger spindle
40	RT.074.D1	Ply panel assembly for switch box
41	RT.074.D2	Ply panel for switch box
42	RT.074.D3	Starter switch block

DRAWING NOT TO BE SCALED

## ALTERATIONS



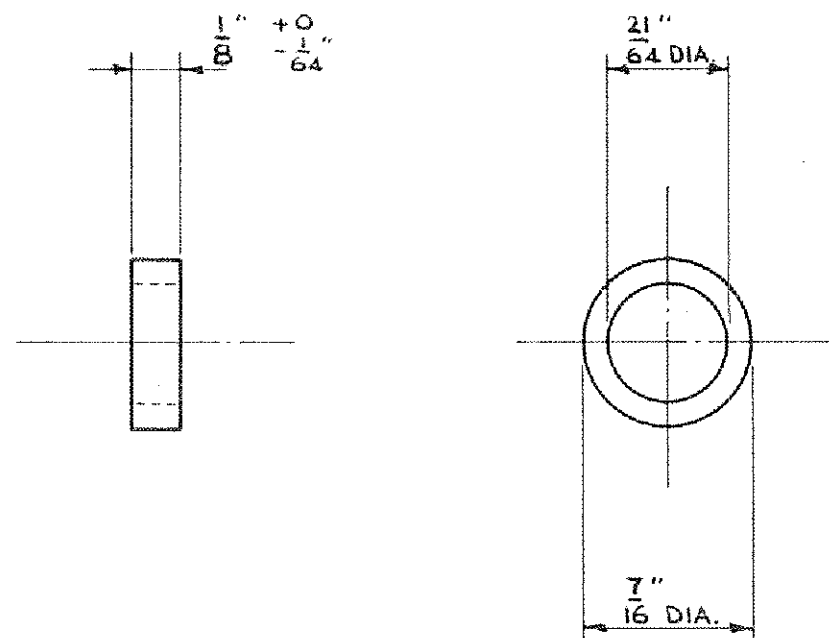
TWICE FULL SIZE

					TITLE					INSULATING BUSH				
					ISSUE NO. 1					PROCESS SPEC. NO.				
					ALTN. NO. -									
					DATE 6/1/16									
					DRAWN PHE									
					CHECKED									
					PASSED CS									
					ISSUE NO.					PART NO.				
					ALTN. NO.					546-96				
					DATE									
					DRAWN									
					CHECKED									
					PASSED									
										ALL PARTS MUST BEAR OUR PART NO.				
										DATE LETTER & MAKER'S TRADE MARK				
546-96					INSULATING BUSH					EBONITE				
PART NO.					DESCRIPTION					MTL. SPEC. NO. PER ASSY.				
⊕ MACHINED ALL OVER					LIMITS TO NEWELL STANDARDS					DIMENSIONS WITHOUT				
f MACHINED					B FOR HOLES P PUSH FIT X RUNNING FIT					LIMITS TO BE IN				
G GROUND					F FORCE FIT D DRIVING FIT Y " "					ACCORDANCE WITH L.P.T.B.				
					DATA SHEET DSI					RT 3. 3046-26				
										TYPE ASSD.ON TYPE ASSD.ON				

E 5N/309/2(3)  
3200-3 45

DRAWING NOT TO BE SCALED

## ALTERATIONS

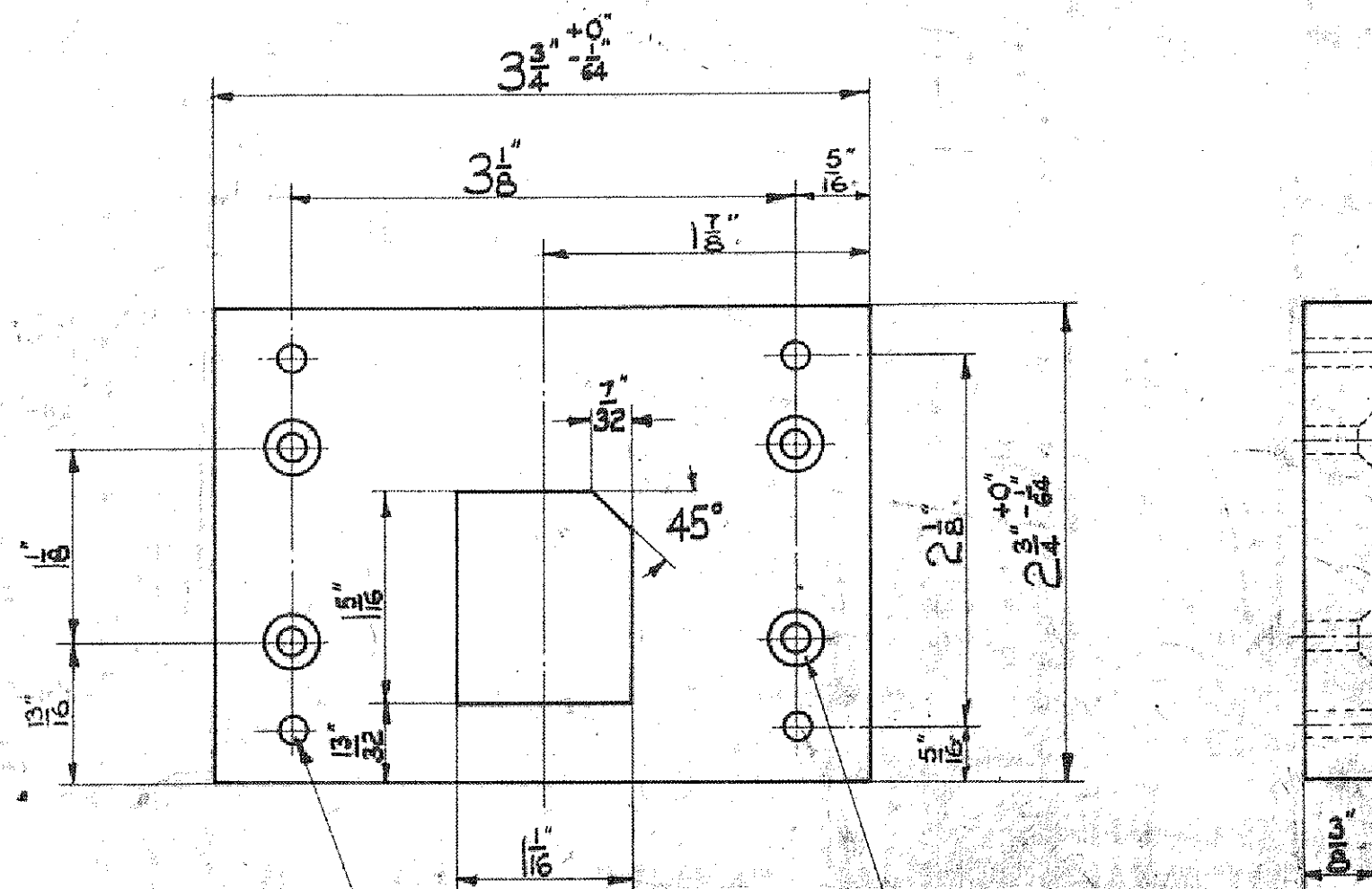


TWICE FULL SIZE

				TITLE				INSULATING BUSH			
				ISSUE NO				1			
				ALTN. NO				-			
				DATE				6/2/46			
				DRAWN				FAR			
				CHECKED							
				PASSED				CS			
				ISSUE NO							
				ALTN. NO							
				DATE							
				DRAWN							
				CHECKED							
				PASSED							
546-107				INSULATING BUSH				PROCESS SPEC. NO			
PART NO				DESCRIPTION				PART NO			
				MTL SPEC. NO PER ASSY.				546-107			
⊕ MACHINED ALL OVER f MACHINED G GROUND				LIMITS TO NEWELL STANDARDS B FOR HOLES P PUSH FIT X RUNNING FIT F FORCE FIT D DRIVING FIT Y " "				DIMENSIONS WITHOUT LIMITS TO BE IN ACCORDANCE WITH L.P.T.B. DATA SHEET DS1			
RT. 3.				3046-26.				TYPE ASSD.ON			
TYPE				ASSD.ON				TYPE ASSD.ON			
								ALL PARTS MUST BEAR OUR PART NO			
								DATE LETTER & MAKERS TRADE MARK			

DRAWING NOT TO BE SCALED

ALTERATIONS



8 HOLES  $\frac{13}{64}$  DIA. TO JIG.  
 JIG DRILL

4 HOLES  $\frac{5}{16}$  DIA. AT 90° TO JIG.  
 JIG DRILL

XL 34 DRAWN FROM SAMPLE

					TITLE BOTTOM COVER PLATE.									
					ISSUE NO					PROCESS SPEC NO				
					ALTN. NO									
					DATE									
					DRAWN									
					CHECKED									
					PASSED									
					ISSUE NO					PART NO 3046-27				
					ALTN. NO									
					DATE									
					DRAWN									
					CHECKED					ALL PARTS MUST BEAR OUR PART NO DATE LETTER & MAKERS TRADE MARK				
					PASSED									
3046-27. BOTTOM COVER PLATE.					LAMINATED BAKELITE									
PART NO		DESCRIPTION		MTL	SPEC	NO PER ASSY.								
⊕ MACHINED ALL OVER		LIMITS TO NEWELL STANDARDS		DIMENSIONS WITHOUT LIMITS TO BE IN ACCORDANCE WITH L.T.E. DATA SHEET D61			RT.3	3046-26						
⊕ MACHINED GROUND		B FOR HOLES P PUSH FIT X RUNNING FIT F FORCE FIT D DRIVING FIT Y					TYPE	ASSD ON	TYPE	ASSD ON				



DRAWING NOT TO BE SCALED

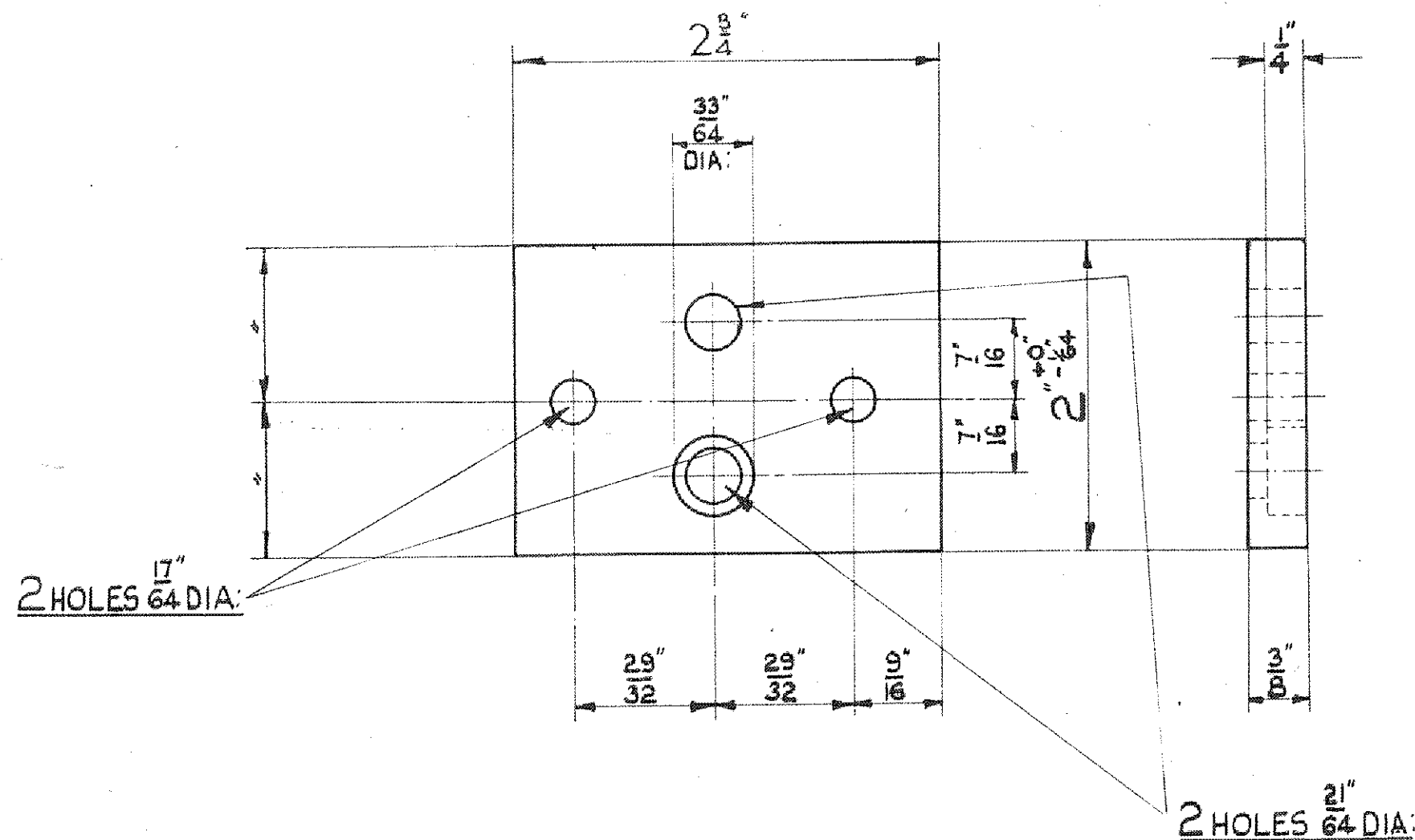
ALTERATIONS

ISSUE 2.  
 7/8" BEVEL ADDED  
 TO 2 CORNERS.

A.A.W. 275.

ISSUE 3  
 7/8" BEVEL DELETED  
 2 3/4" DIM. WAS 3 1/8".

ISSUE 4  
 PART N° OF UNDRILLED  
 BLOCK ADDED. DGN.  
 104 C. MATERIAL  
 SPEC. ADDED (W.256)



PART N° OF UNDRILLED BLOCK 3049-1628

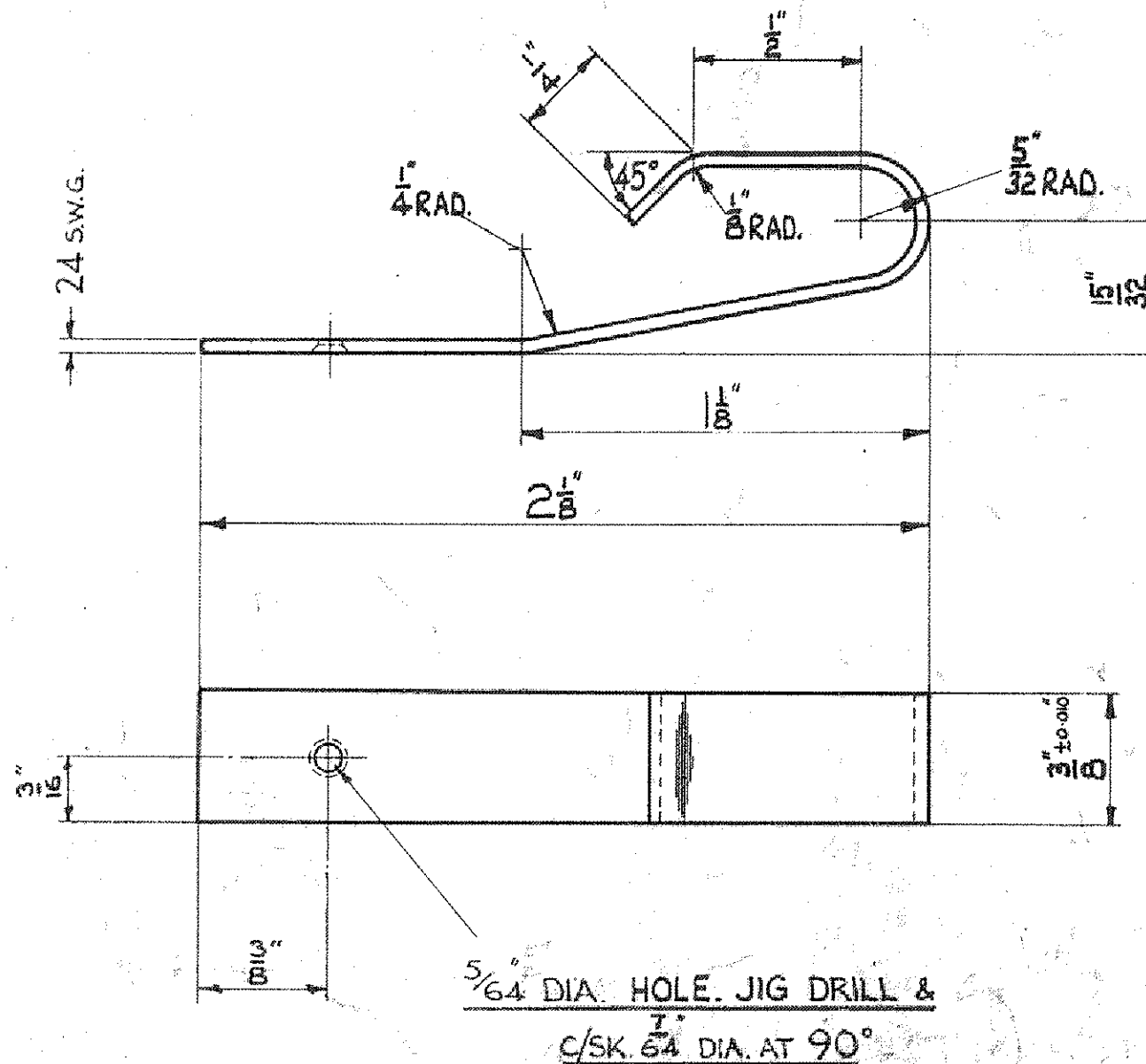
ALL HOLES JIG DRILLED.

				TITLE INSULATING BLOCK.			
				ISSUE NO.	1	2	3
				ALTN. NO.	-	W.275	W.275
				DATE	2/4/46	1-6-55	12/7/55
				DRAWN	PRP	LL	LL
				CHECKED	PRP	LL	LL
				PASSED	PRP	LL	LL
				ISSUE NO.			
				ALTN. NO.			
				DATE			
				DRAWN			
				CHECKED			
				PASSED			
				PROCESS SPEC. N°			
				PART N°			
				3046-28			
				ALL PARTS MUST BEAR OUR PART N°			
				DATE LETTER & MAKER'S TRADE MARK			

DEPARTMENT OF THE CHIEF ENGINEER (BUSES & COACHES)

L.T.E. CHISWICK WORKS, LONDON, W. 4.

DRAWING NOT TO BE SCALED



5/64" DIA. HOLE. JIG DRILL &  
C/SK. 7/64" DIA. AT 90°

SCALE:- TWICE FULL SIZE

TITLE CONTACT SPRING.

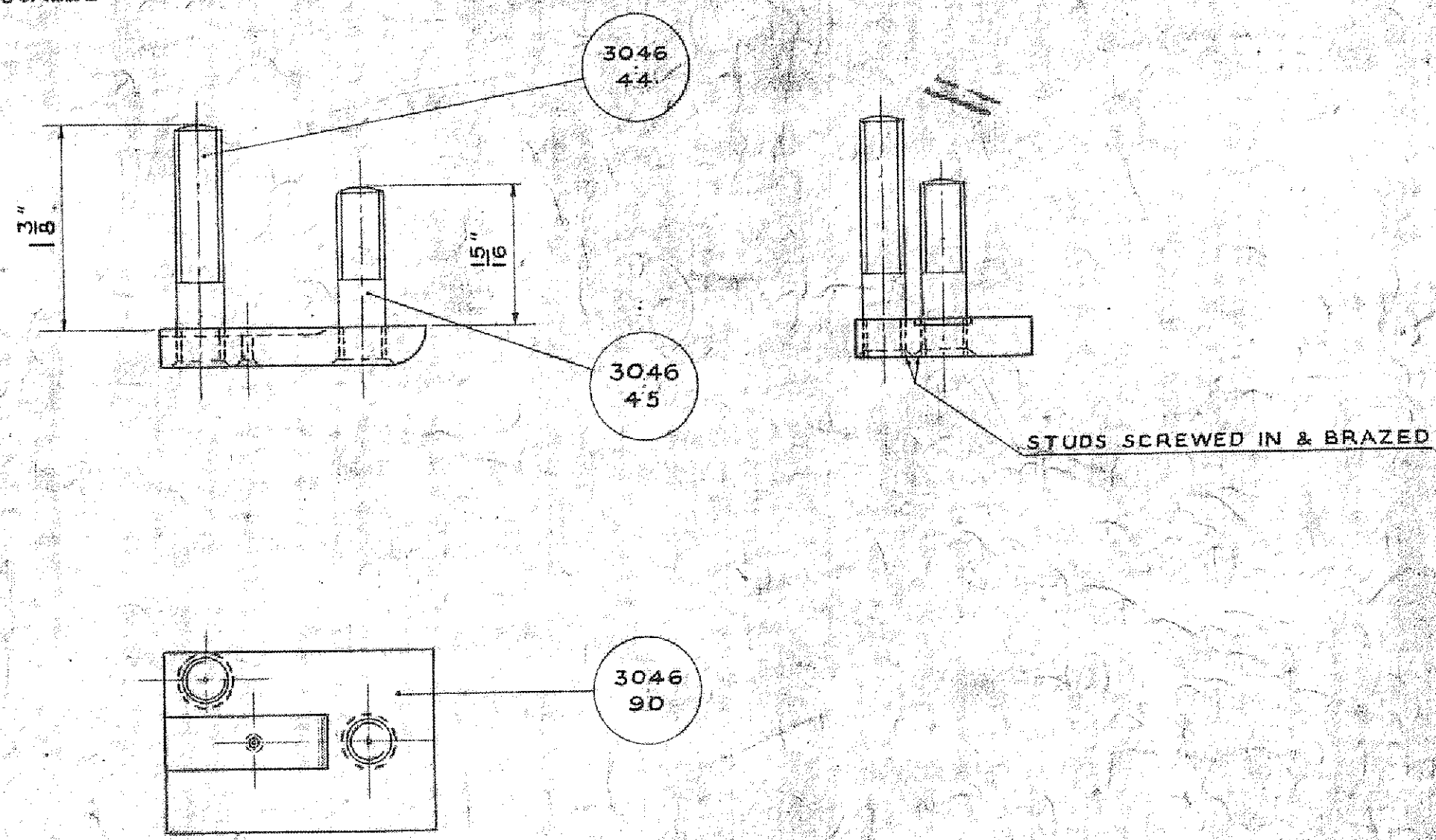
ISSUE NO.	1	2	3	4	PROCESS SPEC. NO.
ALTN. NO.	-	MOD. A	MOD. B		
DATE	5/4/46	8-9-50	18/12/50	11-12-53	PART NO.  3046-29
DRAWN	W. J.	L. A.	L. L.	R. E. D.	
CHECKED	W. J.	L. A.	L. L.	R. E. D.	
PASSED	W. J.	L. A.	L. L.	R. E. D.	
ISSUE NO.					ALL PARTS MUST BEAR OUR PART NO. DATE LETTER & MAKERS' TRADE MARK
ALTN. NO.					
DATE					
DRAWN					
CHECKED					
PASSED					

ALL PARTS MUST BEAR OUR PART NO.  
DATE LETTER & MAKER'S TRADE MARK

E 38/308/2(3)  
200-345

DEPARTMENT OF THE CHIEF ENGINEER (BUSES & COACHES)  
L.T.E. CHISWICK WORKS, LONDON, W.4.

DRAWING NOT TO BE SCALED



ALTERATIONS  
ISSUE 2.  
DRG. REDRAWN  
WITH 3046-90  
NOW DETAILED  
ON SEPARATE  
DRAWING.

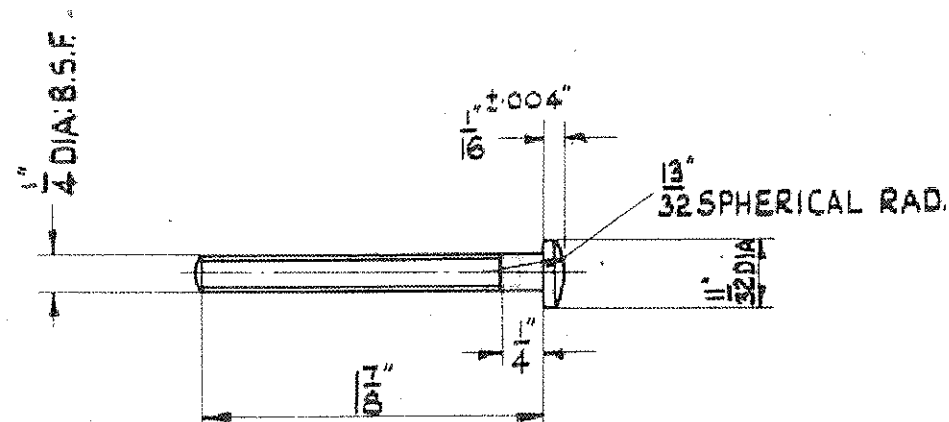
\* SEE SEPARATE DRG.

TITLE CONTACT PLATE ASSY									
3046-45	STUD SHORT	X	—	I					
3046-44	STUD LONG	X	—	I					
3046-90	CONTACT PLATE	X	—	I					
3046-30	CONTACT PLATE ASSY*	—	—	—					
PART NO	DESCRIPTION	MTL	SPEC.	NO PER ASSY.					
⊕ MACHINED ALL OVER	LIMITS TO NEWELL STANDARDS	DIMENSIONS WITHOUT LIMITS TO BE IN ACCORDANCE WITH L.T.E. DATA SHEET DSI			RT.3	3046-89			
⊕ MACHINED GROUND	B FOR HOLES P PUSH FIT X RUNNING FIT F FORCE FIT D DRIVING FIT Y "				TYPE	ASSD.ON	TYPE	ASSD.ON	
					ISSUE NO 2 ALTN. NO Mod.1 DATE 7.10.48 DRAWN J. HILL CHECKED J. HILL PASSED J. HILL ISSUE NO ALTN. NO DATE DRAWN CHECKED PASSED				
					PROCESS SPEC. NO PART NO 3046-30 ALL PARTS MUST BEAR OUR PART NO. DATE LETTER & MAKER'S TRADE MARK				



DRAWING NOT TO BE SCALED

ALTERATIONS



TITLE					BOLT-AUXILIARY STARTER SOCKET.				
ISSUE NO					1				
ALTN. NO					-				
DATE					2/1/66				
DRAWN					PHE				
CHECKED					PHE				
PASSED					PHE				
ISSUE NO									
ALTN. NO									
DATE									
DRAWN									
CHECKED									
PASSED									
PROCESS SPEC. NO					P.T. 8				
PART NO					3046-31				
ALL PARTS MUST BEAR OUR PART NO.					DATE LETTER & MAKERS TRADE MARK				

PART NO	DESCRIPTION	MTL	SPEC.	NO PER ASSY.	RT.3.	3046 - 26	TYPE	ASSD.ON	TYPE	ASSD.ON
3046-31	BOLT-AUXILIARY STARTER SOCKET.	M.S.	N° 7							
⊕	MACHINED ALL OVER	LIMITS TO NEWELL STANDARDS		DIMENSIONS WITHOUT LIMITS TO BE IN ACCORDANCE WITH L.T.E. DATA SHEET DSI						
f	MACHINED	B FOR HOLES P PUSH FIT X RUNNING FIT								
G	GROUND	F FORCE FIT D DRIVING FIT Y " "								



58/303/2(3)  
1200-3-45

Technical drawing of a rectangular plate with the following dimensions and features:

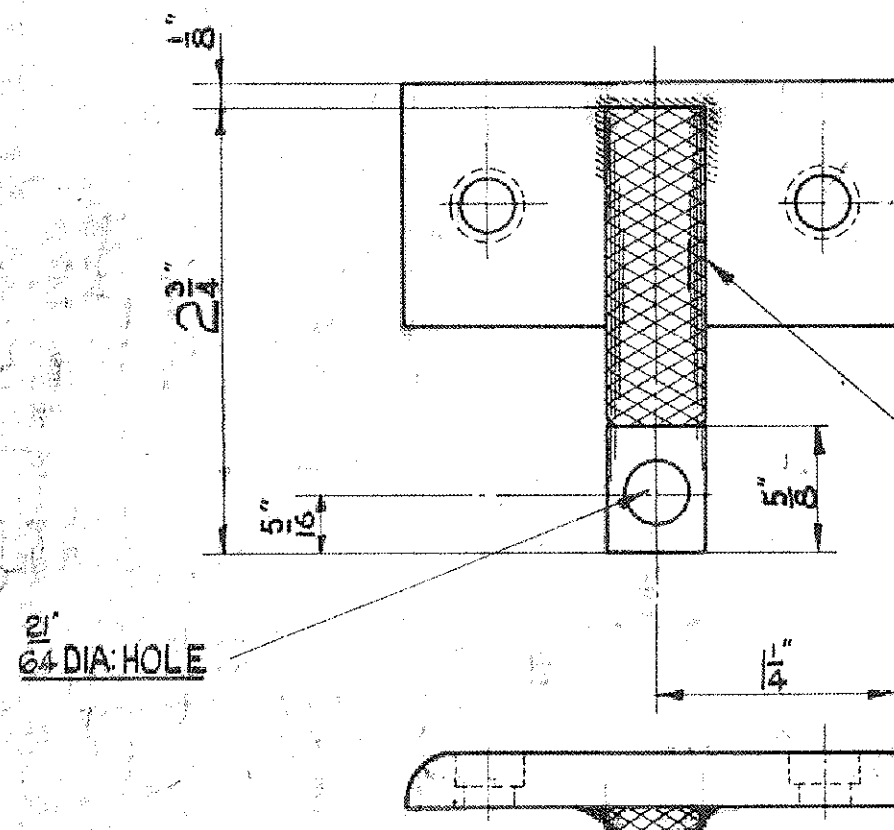
- Overall width:  $3\frac{3}{4}"$
- Overall height:  $3\frac{1}{2}"$
- Inner rectangular area:  $3\frac{1}{8}"$  wide and  $2\frac{3}{4}"$  high.
- Inner corner radii:  $\frac{1}{32}"$  RADII.
- Outer corner radii:  $\frac{1}{4}"$  RADII.
- Four holes, each  $\frac{5}{32}"$  DIA, are located in the corners of the plate.
- Four holes, each  $\frac{5}{32}"$  DIA, are located in the corners of the inner rectangular area.
- Dimensions for hole placement:  $1\frac{3}{8}"$  from the bottom edge to the center of the bottom holes, and  $1\frac{1}{8}"$  from the right edge to the center of the right holes.
- Dimensions for hole placement:  $1\frac{1}{8}"$  from the top edge to the center of the top holes, and  $1\frac{1}{8}"$  from the left edge to the center of the left holes.
- Dimensions for hole placement:  $1\frac{1}{8}"$  from the bottom edge to the center of the bottom holes, and  $1\frac{1}{8}"$  from the left edge to the center of the left holes.
- Dimensions for hole placement:  $1\frac{1}{8}"$  from the top edge to the center of the top holes, and  $1\frac{1}{8}"$  from the right edge to the center of the right holes.

[illegible]

TITLE CASING-AUXILIARY STARTER SOCKET.

										TITLE <b>CASING-AUXILIARY STARTER SOCKET.</b>									
										ISSUE NO ALTN. NO DATE DRAWN CHECKED PASSED ISSUE NO ALTN. NO DATE DRAWN CHECKED PASSED				PROCESS SPEC. NO P.T.4					
										1 - 1/4/66 PAT 35				2 - 8.2.55 SCANLAN 7		3 W.275 1.6.55 11 7		PART NO 3046-32	
3046-32 CASING-AUXILIARY STARTER SOCKET, AL <sup>1</sup> ALLOY A.13																			
PART NO DESCRIPTION MTL SPEC. NO PER ASSY.																			
⊕ MACHINED ALLOVER f MACHINED GROUND										LIMITS TO NEWALL STANDARDS B FOR HOLES P PUSH FIT X RUNNING FIT F FORCE FIT D DRIVING FIT Y " " DIMENSIONS WITHOUT LIMITS TO BE IN ACCORDANCE WITH L.T.E. DATA SHEET DSI									
										RT.3. 3046-26									
										TYPE ASSD.ON TYPE ASSD.ON									
										ALL PARTS MUST BEAR OUR PART NO. DATE LETTER & MAKERS TRADE MARK									

DRAWING NOT TO BE SCALED



3046  
-122

3046  
-123

MADE FROM  
SS. 3047-1313

3046  
-124

ANNEAL  
BEFORE FITTING

TO BE BRAZED  
ON PLATE. USE  
APPROVED LOW  
TEMPERATURE  
PROCESS.

# ALTERATIONS

## ISSUE N° 2

NOTE: PART N°  
3046-122 NOW  
DETAILED ON  
SEPARATE DRG.

## ISSUE 3.

PART N° 3046-124 WAS  
7/16" DIA. x 20" x 5/8" L.  
NOTES "ANNEAL BE-  
FORE FITTING" &  
USE APPROVED  
LOW TEMP. ETC."  
ADDED. NON 17 B.  
3046-124 RAISED  
TO ISSUE 2

## ISSUE 4.

PART N° 3046-123  
DIMS WERE 1/2" x 1/8"  
x 2 3/4". ISSUE N°  
RAISED TO 2. NOTE  
MADE FROM ETC."  
ADDED.

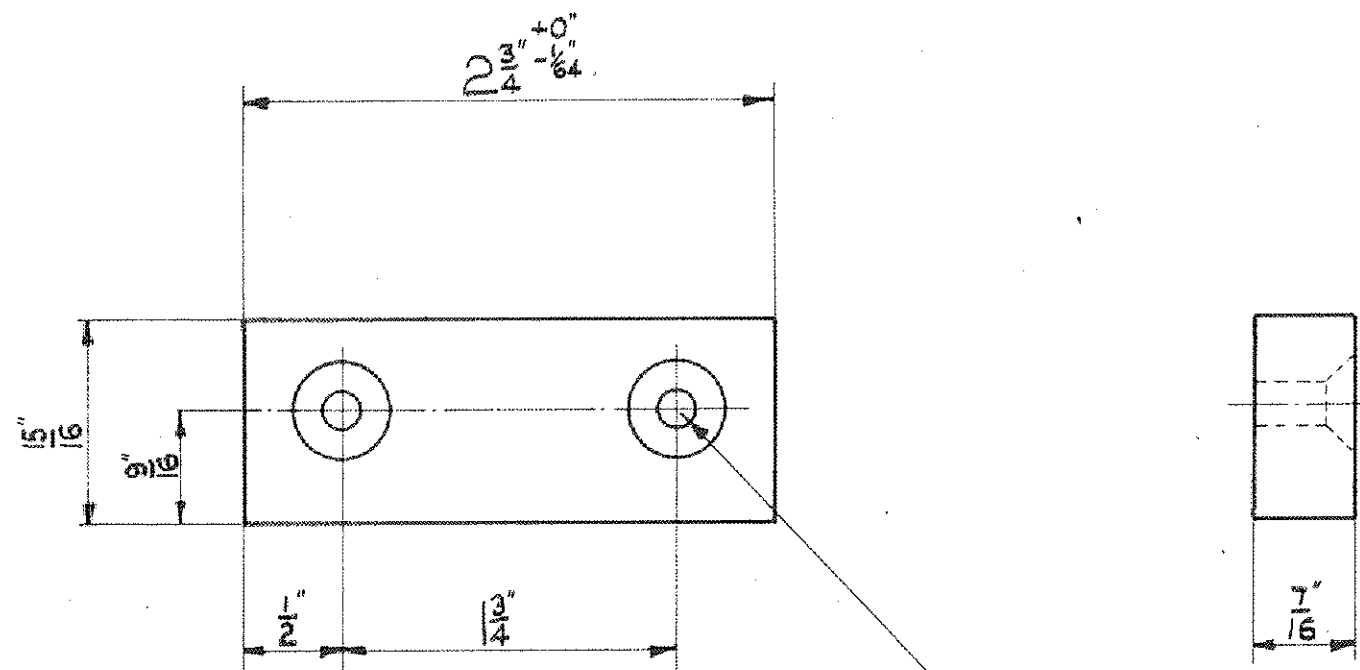
\* SEE SEPARATE DRG.

PART N°	DESCRIPTION	MTL	SPEC.	N° PER ASSY.
3046-124	3/8" DIA. x 22 SWG. TUBE 5/8" L.	COPPER		1
3046-123	1/16" x 3/32" BRAID 2 3/4" LONG	COPPER		1
3046-122	CONTACT PLATE	X		1
3046-33	MOVEABLE CONTACT ASSY.			
⊕	MACHINED ALL OVER			
f	MACHINED			
G	GROUND			
	LIMITS TO NEWELL STANDARDS			
	B FOR HOLES P PUSH FIT X RUNNING FIT			
	F FORCE FIT D DRIVING FIT Y			
	DIMENSIONS WITHOUT LIMITS TO BE IN ACCORDANCE WITH L.T.E. DATA SHEET DSI			
RT.3	3046-26			
TYPE	ASSD.ON	TYPE	ASSD.ON	

TITLE MOVEABLE CONTACT ASSY.				
ISSUE N°	1	2	3	4
ALTN. N°	-	Mod 1	Mod 1a	Mod 1a
DATE	10/4/46	11/10/46	5/10/48	10/1/49
DRAWN	CHC	CHC	CHC	CHC
CHECKED	CHC	CHC	CHC	CHC
PASSED	CHC	CHC	CHC	CHC
ISSUE N°				
ALTN. N°				
DATE				
DRAWN				
CHECKED				
PASSED				
PROCESS SPEC. N°				
PART N°				
3046-33				
ALL PARTS MUST BEAR OUR PAT. N°				
DATE LETTER & MAKER'S TRADE MARK				

DRAWING NOT TO BE SCALED

ALTERATIONS

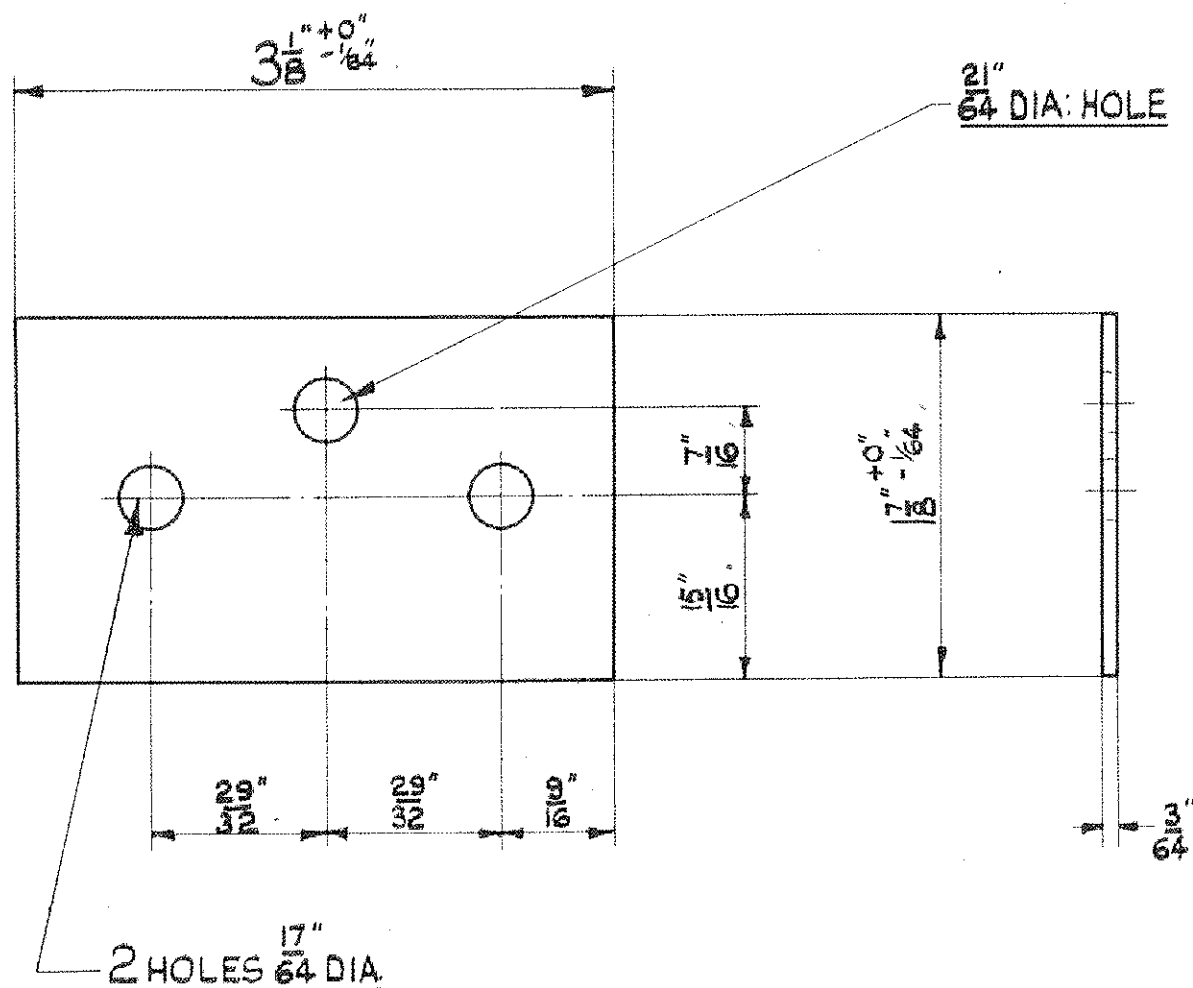


JIG DRILL 2 HOLES  $\frac{13}{64}$ " DIA: C'SK  $\frac{7}{16}$ " DIA: AT 90°

TITLE				GUIDE BLOCK.			
3046-34				GUIDE BLOCK.			
PART NO				DESCRIPTION			
MACHINED ALL OVER				LIMITS TO NEWALL STANDARDS			
MACHINED				B FOR HOLES P PUSH FIT X RUNNING FIT			
GROUND				F FORCE FIT D DRIVING FIT Y " "			
LAMINATED BAKELITE				DIMENSIONS WITHOUT LIMITS TO BE IN ACCORDANCE WITH L.T.E. DATA SHEET DSI			
RT.3.				3046-26			
TYPE				ASSD.ON			
TYPE				ASSD.ON			
ISSUE NO				1			
ALTN. NO				-			
DATE				4/4/46			
DRAWN				LRE			
CHECKED				5/			
PASSED							
ISSUE NO							
ALTN. NO							
DATE							
DRAWN							
CHECKED							
PASSED							
PROCESS SPEC. NO							
PART NO				3046-34			
ALL PARTS MUST BEAR OUR PART NO DATE LETTER & MAKER'S TRADE MARK							

DRAWING NOT TO BE SCALED

ALTERATIONS



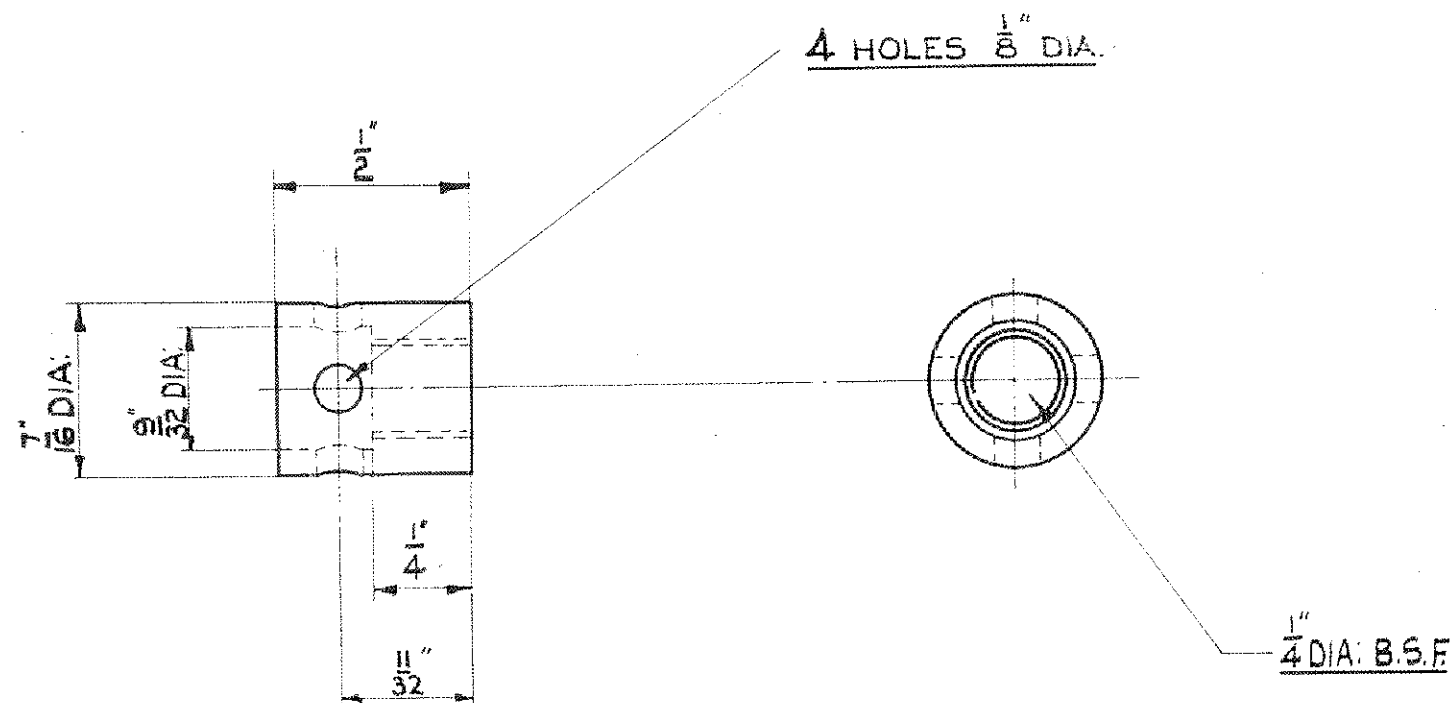
ALL HOLES JIG DRILLED.

				TITLE INSULATING STRIP			
				ISSUE NO 1			
				ALTN. NO -			
				DATE 2.4.46			
				DRAWN			
				CHECKED			
				PASSED			
				ISSUE NO			
				ALTN. NO			
				DATE			
				DRAWN			
				CHECKED			
				PASSED			
				PROCESS SPEC. NO			
				PART NO			
				3046-35			
				ALL PARTS MUST BEAR OUR PART NO			
				DATE LETTER & MAKERS TRADE MARK			
3046-35	INSULATING STRIP	SHEET 1	DATE	RT.3.	3046-26		
PART NO	DESCRIPTION	MTL	SPEC.	NO PER ASSY.			
⊕	MACHINED ALL OVER	LIMITS TO NEWALL STANDARDS		DIMENSIONS WITHOUT LIMITS TO BE IN ACCORDANCE WITH L.T.E. DATA SHEET DSI			
G	MACHINED GROUND	B FOR HOLES P PUSH FIT X RUNNING FIT F FORCE FIT D DRIVING FIT Y " "		TYPE ASSD.ON TYPE ASSD.ON			



DRAWING NOT TO BE SCALED

ALTERATIONS

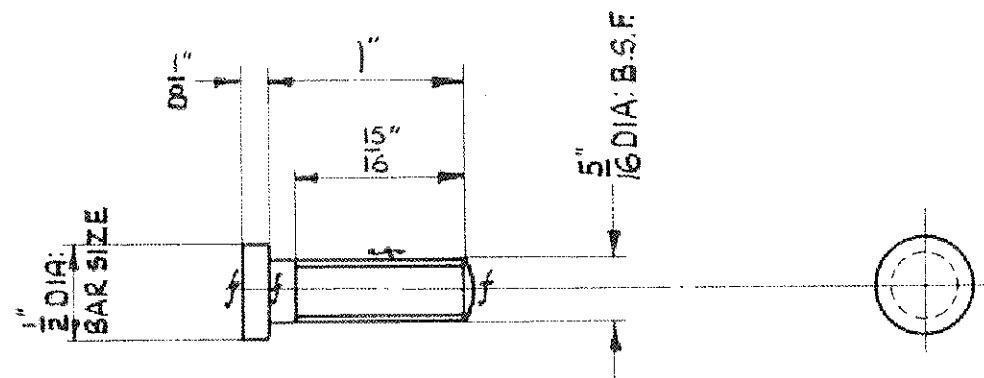


SCALE:- TWICE FULL SIZE.

				TITLE STOP-AUXILIARY STARTER SOCKET.			
				ISSUE NO. 1			
				ALTN. NO.			
				DATE 2/4/46			
				DRAWN			
				CHECKED			
				PASSED			
				ISSUE NO.			
				ALTN. NO.			
				DATE			
				DRAWN			
				CHECKED			
				PASSED			
				PROCESS SPEC. NO.			
				PART NO.			
				3046-36			
				ALL PARTS MUST BEAR OUR PART NO. DATE LETTER & MAKER'S TRADE MARK			
3046-36	STOP-AUXILIARY STARTER SOCKET	BRASS	A.5				
PART NO	DESCRIPTION	MTL	SPEC.	NO PER ASSY.			
⊕	MACHINED ALL OVER	LIMITS TO NEWELL STANDARDS		DIMENSIONS WITHOUT LIMITS TO BE IN ACCORDANCE WITH L.T.E. DATA SHEET DSI		RT.3.	3046-26
f	MACHINED	B FOR HOLES P PUSH FIT X RUNNING FIT				TYPE	ASSD.ON
G	GROUND	F FORCE FIT D DRIVING FIT Y " "				TYPE	ASSD.ON

DRAWING NOT TO BE SCALED

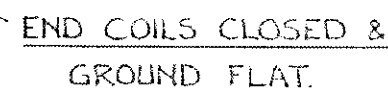
ALTERATIONS



3046-37					CONTACT SCREW.					BRASS A.B.										TITLE CONTACT SCREW.				
PART NO					DESCRIPTION					MTL SPEC.					NO PER ASSY.					ISSUE NO 1				
																				ALTN NO				
																				DATE 4/4/46				
																				DRAWN				
																				CHECKED Pat.				
																				PASSED				
																				ISSUE NO				
																				ALTN NO				
																				DATE				
																				DRAWN				
																				CHECKED				
																				PASSED				
3046-37					CONTACT SCREW.					BRASS A.B.										PROCESS SPEC. NO.				
PART NO					DESCRIPTION					MTL SPEC.					NO PER ASSY.					PART NO				
																				3046-37				
																				ALL PARTS MUST BEAR OUR PART NO				
																				DATE LETTER & MAKERS TRADE MARK				

# ALTERATIONS

REDRAWN SAME  
PART N°. END  
COILS WERE OPEN,  
N° OF FREE COILS  
WAS 10. DIRECTION  
OF WINDING WAS  
RIGHT-HAND.

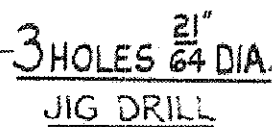


TO BE CADMIUM PLATED.

					TITLE					SPRING - AUXILIARY STARTER SOCKET				
					ISSUE NO 2					PROCESS SPEC NO				
					MOD NO Mod. 1A									
					DATE 9/7/48									
					DRAWN									
					CHECKED									
					PASSED									
					ISSUE NO					PART NO 3046-38				
					MOD NO									
					DATE									
					DRAWN									
					CHECKED					ALL PARTS MUST BEAR OUR PART NO DATE LETTER & MAKERS TRADE MARK				
					PASSED									
3046-38					SPRING									
PART NO					DESCRIPTION									
⊕ MACHINED ALL OVER					LIMITS TO NEWELL STANDARDS									
f MACHINED					B FOR HOLES P PUSH FIT X RUNNING FIT									
G GROUND					F FORCE FIT D DRIVING FIT Y " "									
					DIMENSIONS WITHOUT LIMITS TO BE IN ACCORDANCE WITH L.T.E. DATA SHEET D.S.1					RT.3. 3046-26				
					TYPE ASS'D ON					TYPE ASS'D ON				

5

DRAWING NOT TO BE SCALED



## ALTERATIONS

ISSUE 2.  
7/8" BEVEL ADDED.  
TO 2 CORNERS.

A/A W-275.

ISSUE 3  
7/8" BEVEL DELETED.  
2 3/4" DIA. WAS 3 1/8."

ISSUE 4  
PART NO OF UNDRILLED  
BLOCK ADDED. DQN.  
104C. MATERIAL  
SPEC. ADDED (W.25G)

ISSUE 5  
PART N° 3049-1628  
WAS 3049-1629 IN  
ERROR.

PART N° OF UNDRILLED BLOCK 3049-1628

[illegible]



E 58/309/2 (3)  
3200-348

3046-40  
PART NO  
MACHINED  
ALL OVER  
MACHINED  
GROUND

[illegible]

## ALTERATIONS

				TITLE TOP COVER PLATE.			
				ISSUE NO. 1 ALTN. NO. - DATE 3/4/66 DRAWN CHECKED ZHE PASSED C2			
				PROCESS SPEC. NO. /			
3046-40 TOP COVER PLATE. LAMINATED BAKELITE				PART NO. 3046-40			
PART NO.		DESCRIPTION		MTL	SPEC.	NO PER ASSY.	
⊕ MACHINED ALL OVER ⊗ MACHINED GROUND		LIMITS TO NEWALL STANDARDS B FOR HOLES P PUSH FIT X RUNNING FIT F FORCE FIT D DRIVING FIT Y " "		DIMENSIONS WITHOUT LIMITS TO BE IN ACCORDANCE WITH L.T.E. DATA SHEET DSI		RT.3. 3046-26.	
				TYPE	ASSD.ON	TYPE	ASSD.ON
				ISSUE NO. ALTN. NO. DATE DRAWN CHECKED PASSED			
				ALL PARTS MUST BEAR OUR PART NO. DATE LETTER & MAKER'S TRADE MARK			

1300 2 15

3046-41  
PART NO



PROCESS SPEC. NO.

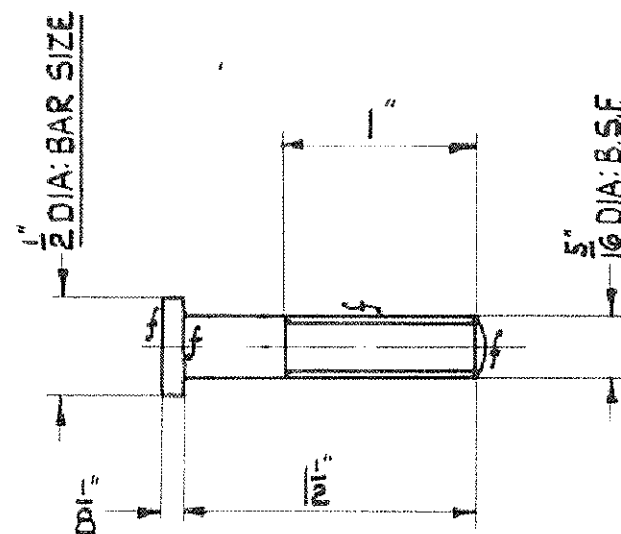
PART NO.

3046-41

ALL PARTS MUST BEAR OUR PART NO.  
DATE LETTER & MAKERS' TRADE MARK

										TITLE INSULATING STRIP									
										ISSUE NO. 1 ALTN. NO. - DATE 4/4/46 DRAWN CHECKED PAF PASSED ISSUE NO. ALTN. NO. DATE DRAWN CHECKED PASSED									
										PROCESS SPEC. NO.									
										PART NO. 3046-41									
3046-41 INSULATING STRIP										SHEET BAKELITE									
PART NO. DESCRIPTION										MTL. SPEC. NO. PER ASSY.									
LIMITS TO NEWALL STANDARDS										DIMENSIONS WITHOUT LIMITS TO BE IN ACCORDANCE WITH L.T.E. DATA SHEET DS1									
B FOR HOLES P PUSH FIT X RUNNING FIT										RT.3. 3046-26									
F FORCE FIT D DRIVING FIT Y " "										TYPE ASSD.ON TYPE ASSD.ON									
MACHINED OVER										ALL PARTS MUST BEAR OUR PART NO. DATE LETTER & MAKERS TRADE MARK									
F G MACHINED GROUND																			

DRAWING NOT TO BE SCALED



# ALTERATIONS

ISSUE N° 2.  
1 3/8" DIM. WAS 1"  
ASSY. N° 3049-378  
ADDED.

ISSUE 3  
1" DIM. WAS  
1 3/8". ASSY. N°  
3049-378  
DELETED

## TITLE CONTACT SET SCREW.

ISSUE N°	1	2	3	PROCESS SPEC. N°
ALTN. N°	-	Mod 1	Mod. 1	
DATE	4/4/46	6/8/46	19.11.46	
DRAWN	PAE	PAE	L.M.	
CHECKED	PAE	PAE	CH	
PASSED	PAE	PAE	CH	
ISSUE N°				
ALTN. N°				
DATE				
DRAWN				
CHECKED				
PASSED				

PROCESS SPEC. N°

PART N°  
3046-42

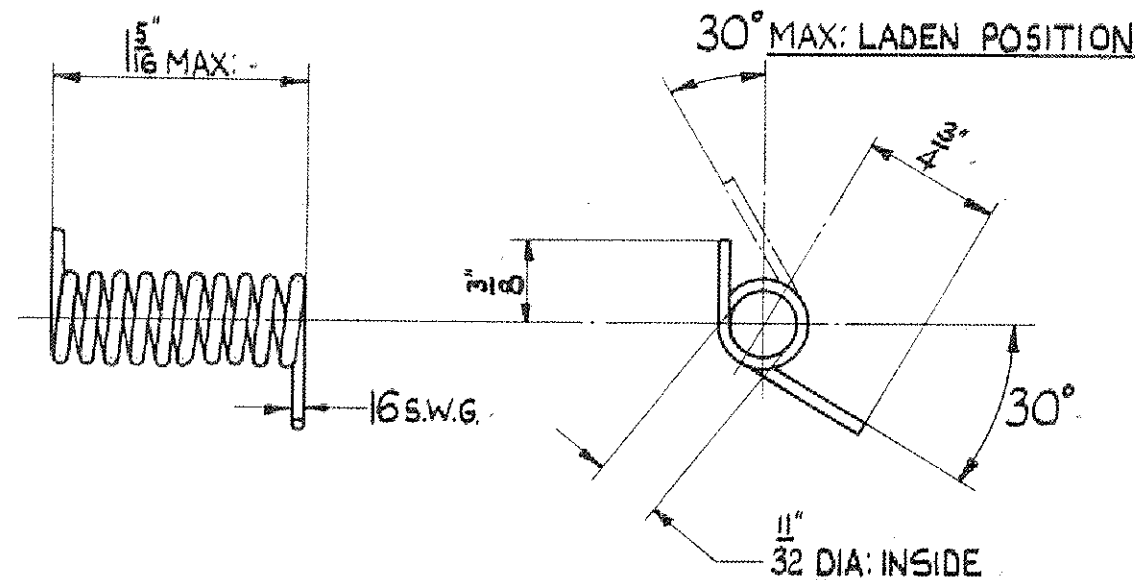
ALL PARTS MUST BEAR OUR PART N°  
DATE LETTER & MAKER'S TRADE MARK

3046-42	CONTACT SET SCREW	BRASS A.B.	
PART N°	DESCRIPTION	MTL	SPEC.
⊕	MACHINED ALL OVER		
f	MACHINED		
G	GROUND		
	LIMITS TO NEWELL STANDARDS		
	B FOR HOLES P PUSH FIT X RUNNING FIT		
	F FORCE FIT D DRIVING FIT Y " "		

RT.3.	3046-26
TYPE	ASSD.ON
TYPE	ASSD.ON

DRAWING NOT TO BE SCALED

ALTERATIONS

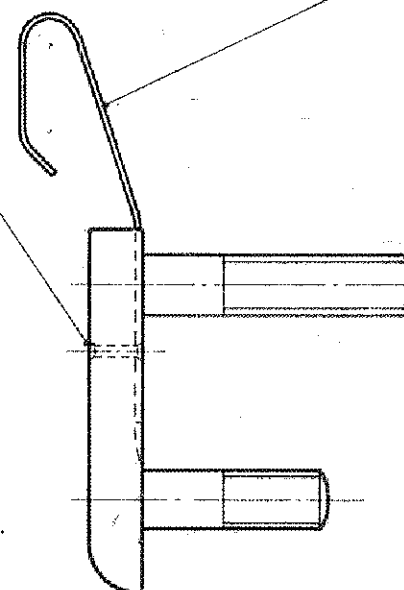


10 COILS.  
 HARDEN & TEMPER.  
 BLACK ENAMELLED.  
 DRAWN IN FREE POSITION.

3046-76 HINGE SPRING.					TITLE HINGE SPRING.				
PART N°					ISSUE N°				
DESCRIPTION					ALTN. N°				
MTL SPEC. N° PER ASSY.					DATE				
STEEL N° 13					DRAWN				
LIMITS TO NEWELL STANDARDS					CHECKED				
B FOR HOLES P PUSH FIT X RUNNING FIT					PASSED				
F FORCE FIT D DRIVING FIT Y " "					ISSUE N°				
DIMENSIONS WITHOUT LIMITS TO BE IN ACCORDANCE WITH L.T.E. DATA SHEET DS1					ALTN. N°				
RT.3. 3049-515.					DATE				
TYPE ASSD.ON TYPE ASSD.ON					DRAWN				
					CHECKED				
					PASSED				
					PROCESS SPEC. N°				
					PART N°				
					3046-76				
					ALL PARTS MUST BEAR OUR PART N° DATE LETTER & MAKER'S TRADE MARK				



E 58/309/24  
3200 3 45

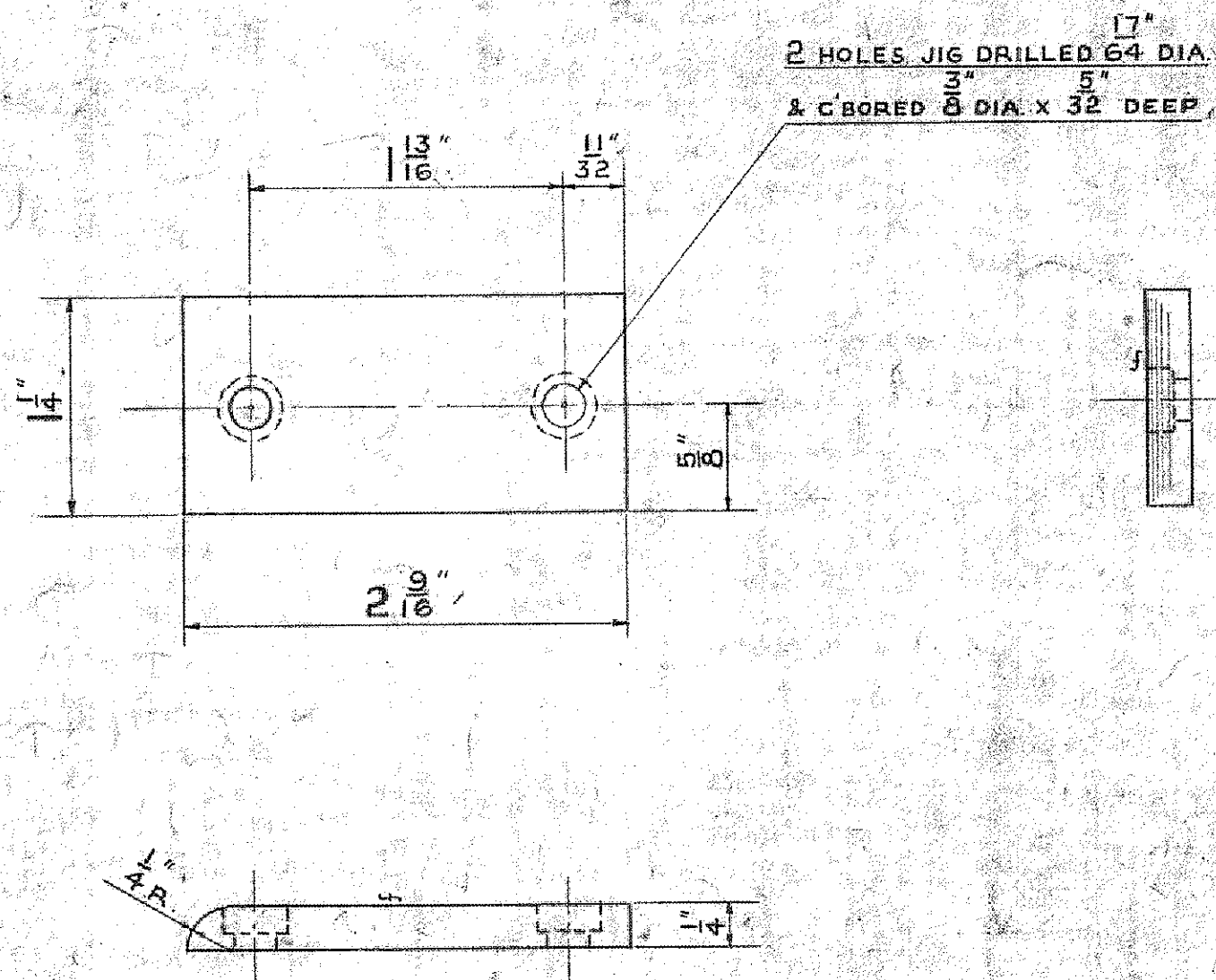


\* SEE SEPARATE DRAWING

ISSUE 2.  
PART NO OF PIN WAS  
3046-121. NOTE  
"CUT TO REQUIRED  
LENGTH" ADDED.

E 58/309/24  
3200 3 45

DRAWING NOT TO BE SCALED



ALTERATIONS

ISSUE 2.  
 1/4 R. WAS 1/8 R.  
 DIM. 2 9/16 WAS  
 2 1/2

					TITLE CONTACT PLATE										
					ISSUE NO		2							PROCESS SPEC. NO	
					ALTN. NO		MOD 1								
					DATE		8.10.45								
					DRAWN		1/21								
					CHECKED										
					PASSED										
					ISSUE NO										
					ALTN. NO										
					DATE										
					DRAWN										
					CHECKED										
					PASSED										



E 58/303/2(3)  
1280-1-45

DRILL HOLE  $\frac{5}{16}$ " DIA. RIGHT THROUGH



JIG DRILL 2 HOLES  $1\frac{3}{64}$ " DIA.  
C/SK.  $\frac{11}{32}$ " DIA. AT 90°

ISSUE 5. A/A W33  
HOLE 5/64 DIA.  
ADDED.

					TITLE LID-AUXILIARY STARTER SOCKET				
					ISSUE NO. 1 2 3 4 5 ALTN. NO. Mod.1 Mod.2 Mod.3AW 337 DATE 26/3/46 14/8/46 19/9/46 1-7-49 31/1/52 DRAWN E.H.H. E.H.H. E.H.H. J.B. J.B. CHECKED J.H. J.H. J.H. J.B. J.B. PASSED J.H. J.H. J.H. J.B. J.B. ISSUE NO. ALTN. NO. DATE DRAWN CHECKED PASSED				
3049-186 LID-AUXILIARY STARTER SOCKET. AL ALLOY A.13.					PROCESS SPEC. NO. PT.6.C				
PART NO. DESCRIPTION MTL SPEC. NO PER ASSY.					PART NO. 3049-186				
MACHINED ALL OVER MACHINED GROUND					LIMITS TO NEWALL STANDARDS B FOR HOLES P PUSH FIT X RUNNING FIT F FORCE FIT D DRIVING FIT Y " "				
DIMENSIONS WITHOUT LIMITS TO BE IN ACCORDANCE WITH LT. DATA SHEET DSI					RT. 3. 3049-515 TYPE ASSD.ON TYPE ASSD.ON				
					ALL PARTS MUST BEAR OUR PART NO. DATE LETTER & MAKERS' TRADE MARK				

DRAWING NOT TO BE SCALED

ISSUE 2:-

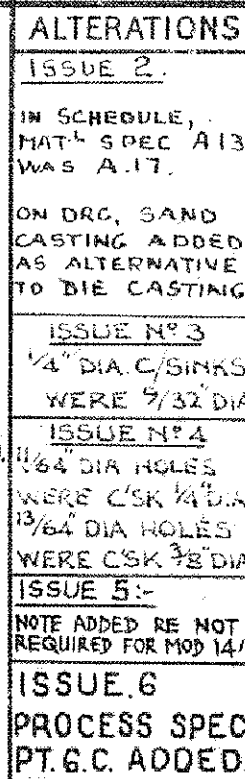
NOTE ADDED RE NOT  
REQUIRED FOR MOD 14/1



THIS DRAWING IS NOT  
REQUIRED FOR RT3  
WHEN MOD. 14/1 IS EMBODIED.

TO BE SPRAYED WHITE ALL OVER

[illegible]



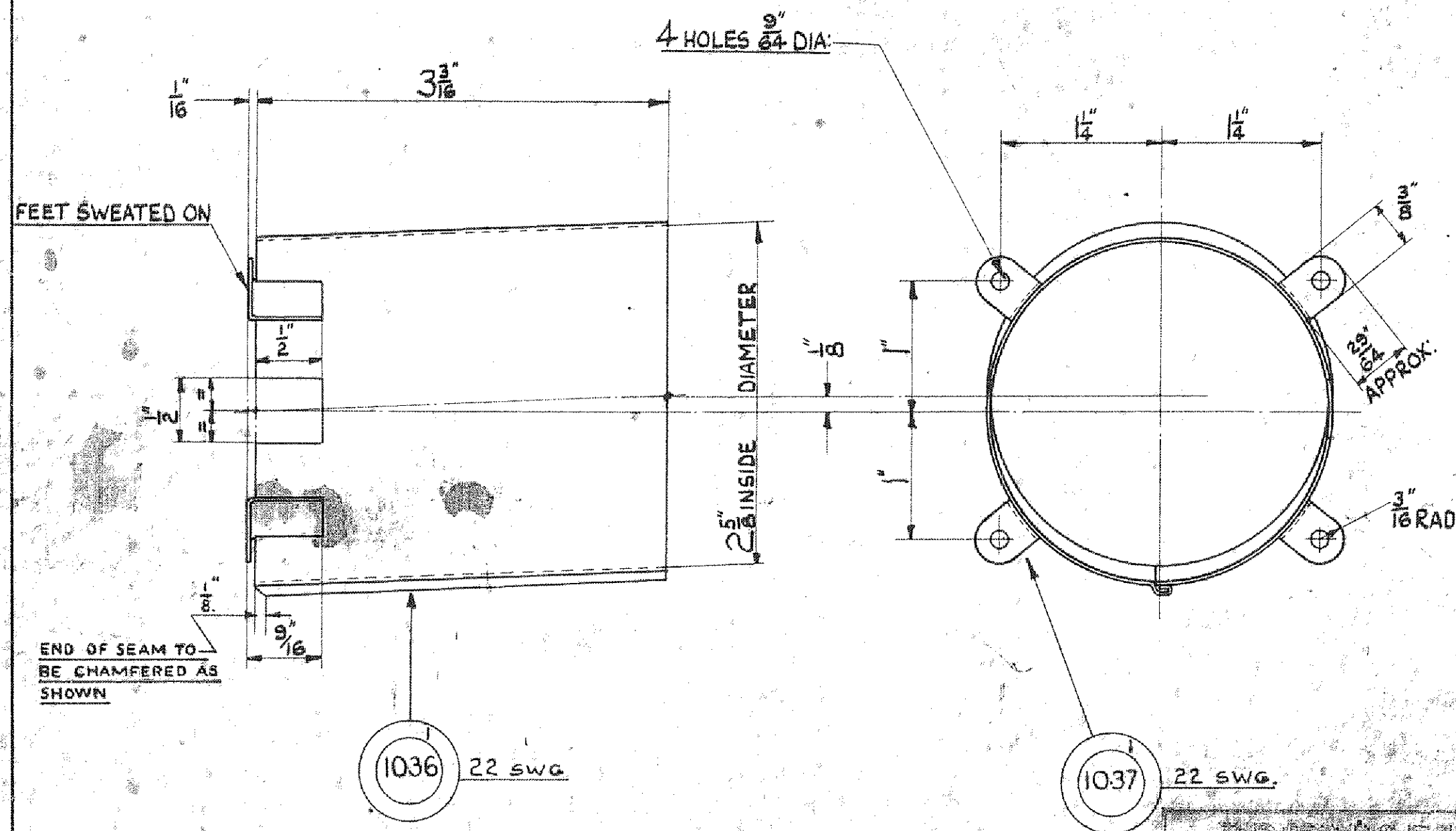
MADE FROM DIE OR SAND CASTING  
UNDERSIDE TO BE SPRAYED WHITE.

E 38/305/2(3)  
 1200-3-45



DEPARTMENT OF THE CHIEF ENGINEER (BUSES & COACHES)  
L.T.E. CHISWICK WORKS, LONDON, W.4.

DRAWING NOT TO BE SCALED



ALTERATIONS

ISSUE 2.

1" DIMEN 8 NOTE RE  
CHAMFER ADDED.

ISSUE 3:-

NOTE ADDED RE NOT  
REQUIRED FOR MOD 141

ASSEMBLY TO BE SPRAYED WHITE ALL OVER

THIS DRAWING IS NOT  
REQUIRED FOR RT3  
WHEN MOD 141 IS APPROVED

TITLE STOP LIGHT SHROUD ASSY

PART NO					DESCRIPTION					MTL SPEC					NO PER ASSY				
3049-1037					FOOT BRACKET					BRASS A5					4				
3049-1036					SHROUD					BRASS A5					1				
3049-257					STOP LIGHT SHROUD ASSY														
PART NO					DESCRIPTION					MTL SPEC					NO PER ASSY				
MACHINED ALL OVER					LIMITS TO NEWELL STANDARDS					DIMENSIONS WITHOUT LIMITS TO BE IN ACCORDANCE WITH DATA SHEET DSI					RT.3. 3049-259				
MACHINED					B FOR HOLES P PUSH FIT X RUNNING FIT					L.T.E.					TYPE ASSD.ON				
GROUND					F. FORCE FIT D. DRIVING FIT Y										TYPE ASSD.ON				

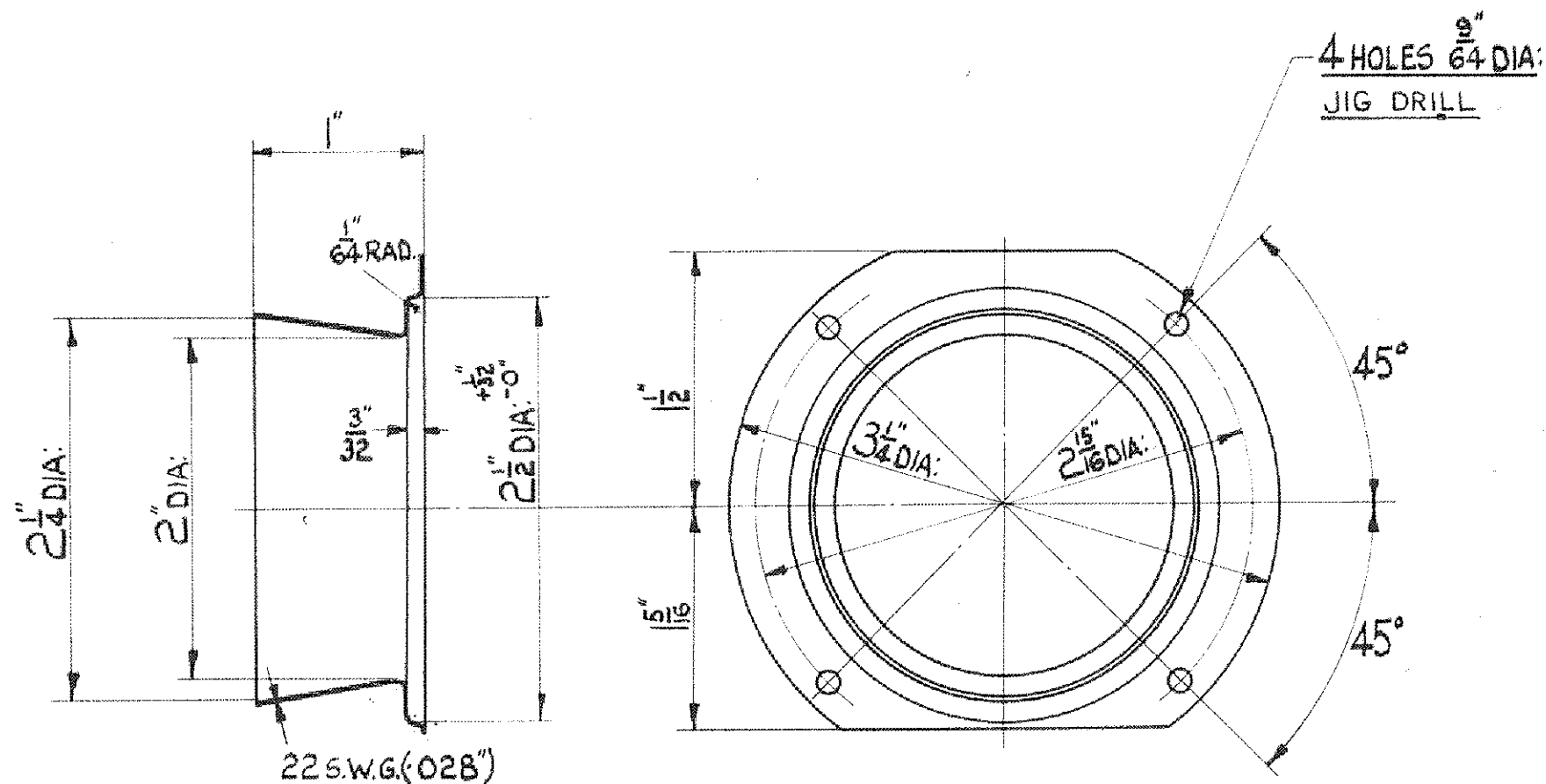
ISSUE NO					PROCESS SPEC NO				
ALTN NO					PART NO				
DATE					3049-257				
DRAWN					ALL PARTS MUST BEAR OUR PART NO				
CHECKED					DATE LETTER & MAKERS TRADE MARK				
PASSED									
ISSUE NO									
ALTN NO									
DATE									
DRAWN									
CHECKED									
PASSED									



DRAWING NOT TO BE SCALED

ALTERATIONS

ISSUE 2:-  
NOTE ADDED RE NOT  
REQUIRED FOR MOD 14/1



TO BE SPRAYED WHITE INSIDE & OUT.

THIS DRAWING IS NOT  
REQUIRED FOR RT3  
WHEN MOD. 14/1 IS EMBODIED.

TITLE					GLASS HOLDER.				
ISSUE NO	1	2							PROCESS SPEC. NO
ALTN. NO		MOD 14/1							
DATE	6-12-45	27-1-48							
DRAWN		JCG							
CHECKED									
PASSED									
ISSUE NO									
ALTN. NO									
DATE									
DRAWN									
CHECKED									
PASSED									
PART NO					3049-258				
ALL PARTS MUST BEAR OUR PART NO					DATE LETTER & MAKERS TRADE MARK				

3049-258	GLASS HOLDER	BRASS	A.5.						
PART NO	DESCRIPTION	MTL	SPEC.	NO PER ASSY.					
⊕	MACHINED ALL OVER								
f	MACHINED								
G	GROUND								
	LIMITS TO NEWALL STANDARDS								
	B FOR HOLES P PUSH FIT X RUNNING FIT								
	F FORCE FIT D DRIVING FIT Y " "								
	DIMENSIONS WITHOUT LIMITS TO BE IN ACCORDANCE WITH L.T.E. DATA SHEET DSI								
		RT.3.	3049-259						
		TYPE	ASSD.ON	TYPE	ASSD.ON				

E 58/309/213  
2300-1-45

55153-3	2 BA SPRING WASHER	STEEL		2
55142-19	2 BA 3/8" 12/H° SCREW	BRASS		2
3049-1127	COVER	*		1
3049-261	INSULATING STRIP	*		1
3049-550	SWITCH CASING ASSEMBLY	*		1
3049-289	SWITCH ASSEMBLY	*		1
3049-288	STARTER SWITCH ASSEMBLY			
PART NO	DESCRIPTION	MTL	SPEC	NO PER ASSY
⊕ MACHINED ALL OVER P MACHINED G GROUND	LIMITS TO NEWELL STANDARDS B FOR HOLES P PUSH FIT X RUNNING FIT F FORCE FIT D DRIVING FIT Y " "	DIMENSIONS WITHOUT LIMITS TO BE IN ACCORDANCE WITH LITE DATA SHEET DSI		



RT3	RT001.W.I.		
TYPE	ASSD.ON	TYPE	ASSD.ON

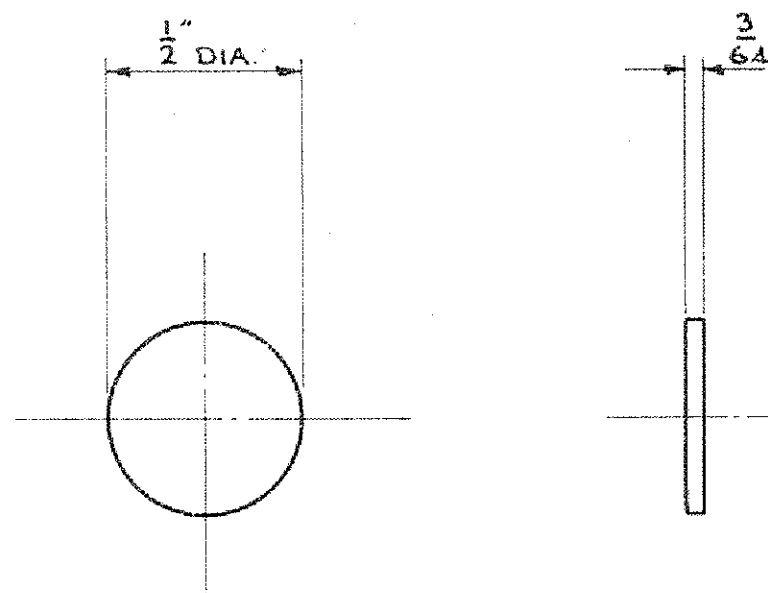
TITLE STARTER SWITCH ASSEMBLY					
ISSUE NO.	2	3			
ALTN. NO.	Modl.	M09-27-7A			PROCESS SPEC. NO.
DATE	22-11-84	13-3-86			
DRAWN	RCS	Jerry Goff			PART NO.
CHECKED	<i>[Signature]</i>	<i>[Signature]</i>			3049-288
PASSED	<i>[Signature]</i>	<i>[Signature]</i>			
ISSUE NO.					
ALTN. NO.					
DATE					
DRAWN					
CHECKED					
PASSED					

ALL PARTS MUST BEAR OUR PART NO.  
DATE LETTER & MAKERS TRADE MARK

## ISSUE: N° 2

155. 3. ADV. N° W. 65/  
NOTE, "THIS PRG  
NOT REQ." ETC  
ADDED.

DRAWING NOT TO BE SCALED



TWICE FULL SIZE

ALTERATIONS

ISSUE 2. <sup>A</sup>/AW.256

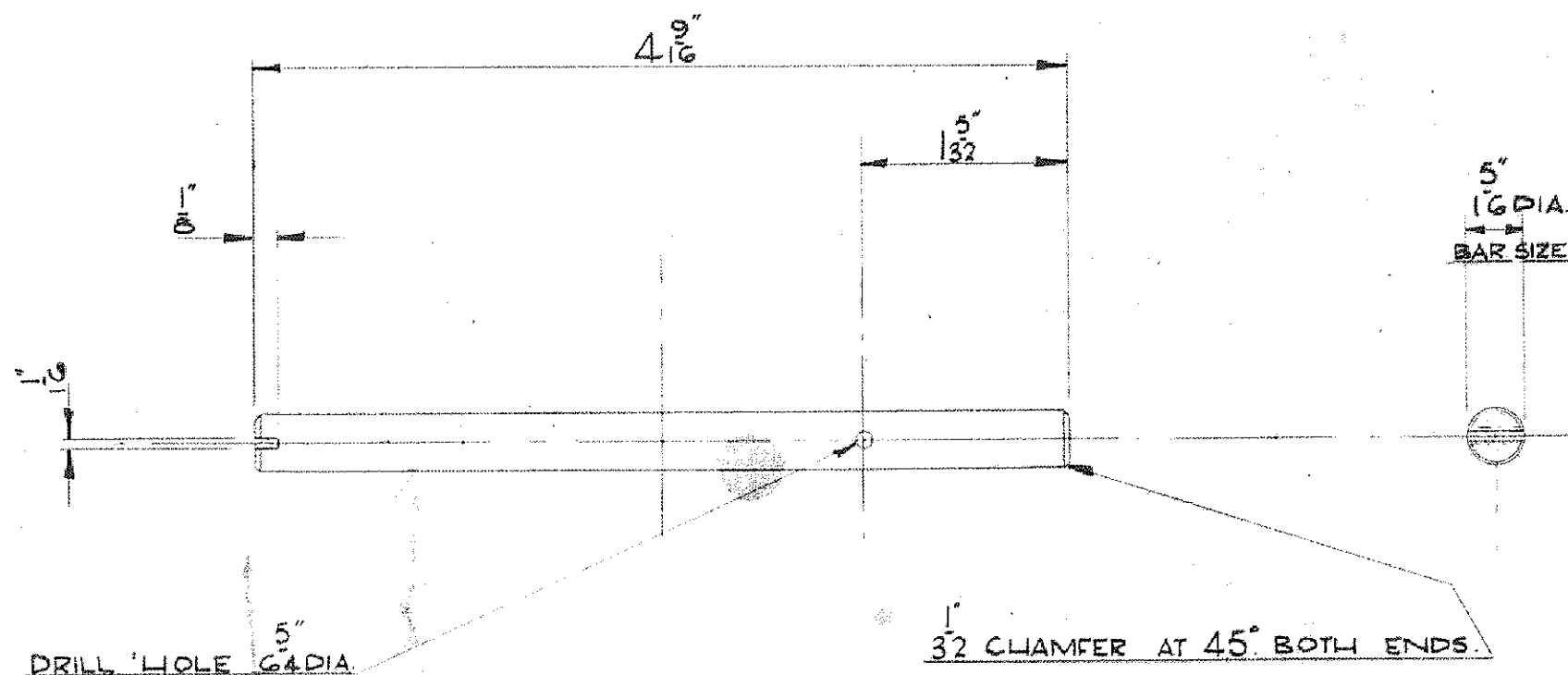
MAT<sup>l</sup> WAS PAPER-BASED TO BS.1137.

				TITLE INSULATING DISC			
				ISSUE NO 1 2			
				ALTN. NO - W.256			
				DATE 6/4/46 24-5-60			
				DRAWN PHE LL			
				CHECKED PHE			
				PASSED PHE			
				ISSUE NO			
				ALTN. NO			
				DATE			
				DRAWN			
				CHECKED			
				PASSED			
				PROCESS SPEC. NO			
				PART NO			
				3049-1091			
				ALL PARTS MUST BEAR OUR PART NO DATE LETTER & MAKER'S TRADE MARK			
3049-1091	INSULATING DISC	S.R.B.F.	BS. 972 TYPE A				
PART NO	DESCRIPTION	MTL	SPEC.	NO PER ASSY.	RT. 3.	3049-378	
⊕ MACHINED ALL OVER f MACHINED G GROUND	LIMITS TO NEWELL STANDARDS B FOR HOLES P PUSH FIT X RUNNING FIT F FORCE FIT D DRIVING FIT Y " "	DIMENSIONS WITHOUT LIMITS TO BE IN ACCORDANCE WITH L.T.E. DATA SHEET DSI			RT. 3.	3046-26	
					TYPE	ASSD.ON	TYPE ASSD.ON

DRAWING NOT TO BE SCALED

ALTERATIONS

ADVICE. W. 337.



TITLE HINGE PIN- AUXILIARY STARTER SOCKET BRKT.

ISSUE NO	MOD. NO	DATE	DRAWN	CHECKED	PASSED	ISSUE NO	MOD. NO	DATE	DRAWN	CHECKED	PASSED	PROCESS SPEC NO	PART NO	3049-1625	ALL PARTS MUST BEAR OUR PART NO DATE, LETTER AND MAKER'S TRADE MARK

ISSUE NO  
MOD. NO  
DATE  
DRAWN  
CHECKED  
PASSED  
ISSUE NO  
MOD. NO  
DATE  
DRAWN  
CHECKED  
PASSED

W. 337  
6.11.76  
J. G. L.  
J. G. L.  
J. G. L.  
J. G. L.  
J. G. L.  
J. G. L.  
J. G. L.  
J. G. L.  
J. G. L.  
J. G. L.

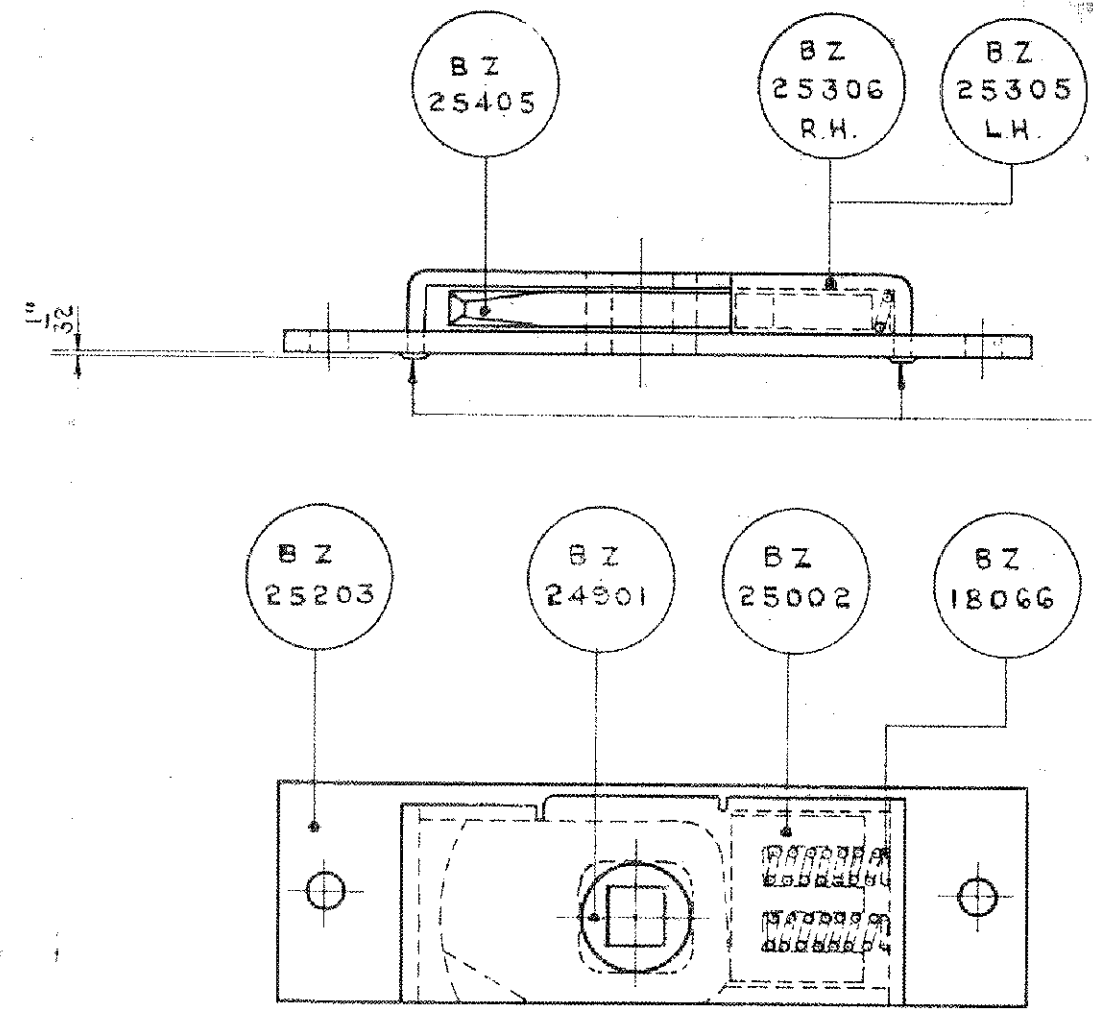
PROCESS SPEC NO  
PART NO  
3049-1625  
ALL PARTS MUST BEAR OUR PART NO  
DATE, LETTER AND MAKER'S TRADE MARK

3049-1625	HINGE PIN.	BRASS A.B													
PART NO	DESCRIPTION	MATL SPEC.	NO PER ASSY.	RT 3.	3049-515.										
⊕ G	MACHINED ALL OVER MACHINED GROUND	LIMITS TO NEWELL STANDARDS B FOR HOLES P PUSH FIT X RUNNING FIT F FORCE FIT D DRIVING FIT Y " "	DIMENSIONS WITHOUT LIMITS TO BE IN ACCORDANCE WITH L.T. DATA SHEET D.S.I.	TYPE	ASSD ON	TYPE	ASSD ON								



DEPT OF THE CHIEF MECHANICAL ENGINEER (ROAD SERVICES)  
L.T.E. CHISWICK WORKS, LONDON, W.4.

DRAWING NOT TO BE SCALED



PROJECTIONS MAY BE LEFT  
TO IMPROVE RIVETTING IF  
NECESSARY, BUT MUST NOT  
EXCEED THE DIMENSION GIVEN.

ALTERATIONS  
ISSUE 4 BZ 204  
REDRAWN WITH  
THE FOLLOWING  
ALTERATIONS -  
BZ 25405 WAS  
BZ 25402  
BZ 25002 WAS  
BZ 25001.  
BZ 18066 WAS  
BZ 18026  
DIMS DELETED.  
ISSUE 5  
PARTS NO BZ 1401  
& BZ 1402 CANCELLED  
ISSUE 1  
ORG. RE ISSUED  
UNDER PARTS NO  
22112-816 &  
22112-817

\* SEE SEPARATE DRAWING

	BZ 18066	SPRING	*		2
	BZ 25002	SLIDING 'E' PIECE	*		1
	BZ 25203	BACK PLATE	*		1
	BZ 25305	COVER PLATE L.H.	*		1
	BZ 24901	BOSS	*		1
	BZ 25405	TONGUE	*		1
22112-817		BUDGET LOCK ASSEMBLY L.H.			
	BZ 18066	SPRING	*		2
	BZ 25002	SLIDING 'E' PIECE	*		1
	BZ 25203	BACK PLATE	*		1
	BZ 25306	COVER PLATE R.H.	*		1
	BZ 24901	BOSS	*		1
	BZ 25405	TONGUE	*		1
22112-816		BUDGET LOCK ASSEMBLY R.H.			
DECIMAL CODE NO.	PART No	DESCRIPTION	MAT.	SPEC.	No PER ASSY.
		LIMITS TO NEWALL STANDARDS			
		B FOR HOLES P PUSH FIT X RUNNING FIT			
		F FORCE FIT D DRIVING FIT Y " "			
		DIMENSIONS WITHOUT LIMITS TO BE IN ACCORDANCE WITH L.T.E. DATA SHEET D.S.1			
		ALL CODES AS REQUIRED			
		TYPE ASSD.ON		TYPE ASSD.ON	

22112  
816 RH AS DRAWN  
22112  
817 LH. OPP. HAND

TITLE		BUDGET LOCK ASSEMBLY	
ISSUE No	4	5	
MOD. No	321		
DATE	8.8.62	11.7.67	12.7.67
DRAWN			
CHECKED			
PASSED			
ISSUE No			
MOD. No			
DATE			
DRAWN			
CHECKED			
PASSED			
PROCESS SPEC No			
PART No		22112-816	
		22112-817	
ALL PARTS MUST BEAR OUR PART No DATE LETTER AND MAKERS TRADE MARK			

K 58/309/2(3)  
1200-3-45

Technical drawing of a mechanical assembly, likely a bracket or support structure. The drawing includes the following dimensions and labels:

- Top dimension:  $3 \frac{1}{16}$
- Right side dimension:  $4 \frac{1}{16}$
- Bottom left dimension:  $2 \frac{19}{32}$
- Bottom right dimension:  $2 \frac{3}{16}$
- Bottom left corner dimension:  $11 \frac{11}{32}$
- Bottom right corner dimension:  $11 \frac{11}{32}$
- Labels: "BR" (bottom left), "BR" (bottom right), "13" (bottom right), "13" (bottom right)

3 DIE CASTING  
OR  
SAND CASTING

ADVICE N° BT-8/2

[illegible]

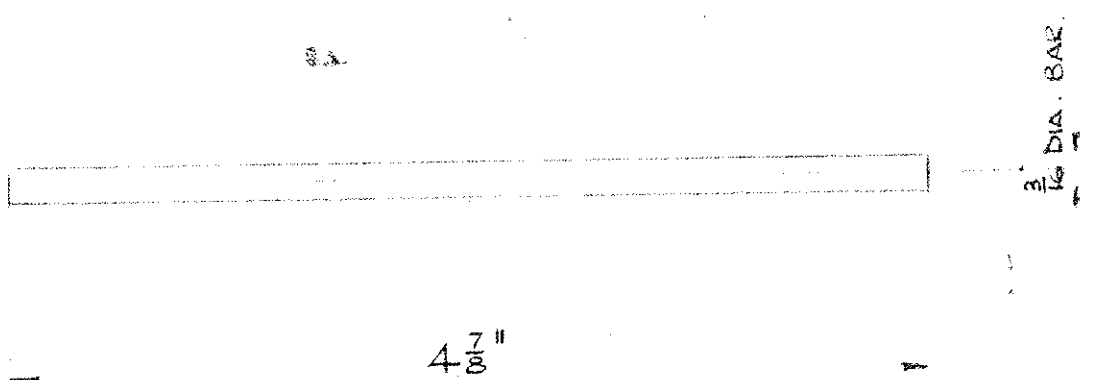


DEPARTMENT OF THE CHIEF ENGINEER (BUSES & COACHES)  
L.T.E. CHISWICK WORKS, LONDON, W.4.

DRAWING NOT TO BE SCALED

ALTERATIONS

ISSUE 2.  
OVERALL LENGTH  
WAS 4<sup>3</sup>/<sub>4</sub>"  
ADVICE Z.826  
REFERS  
ISSUE 3 ADVICE N° 813  
NOTE ADDED RE THIS  
DEC IS NOT READ



THIS DRAWING IS NOT  
TO BE USED  
WHEN MOD 27/2 IS IN USE

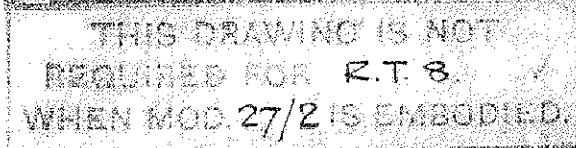
4

RT 035 D4	DOOR HINGE ROD	MS	N° 7	
PART N°	DESCRIPTION	MTL	SPEC.	N° PER ASSY.
⊕ f G	MACHINED ALL OVER MACHINED GROUND	LIMITS TO NEWALL STANDARDS. B FOR HOLES P PUSH FIT X RUNNING FIT F FORCE FIT D DRIVING FIT Y " "		
		DIMENSIONS WITHOUT LIMITS TO BE IN ACCORDANCE WITH L.T.E. DATA SHEET DSI		
		RT3	RT 035 DI	
		TYPE	ASSD.ON	TYPE ASSD.ON

TITLE DOOR HINGE ROD - SPEEDO-CASING.			
ISSUE NO	1	2	3
ALTN. NO		MODIA	MOD 27/2
DATE	31.12.45	2.6.48	13.5.49
DRAWN	A.H.G.	W.D.	W.D.
CHECKED		SH	W.D.
PASSED			
ISSUE NO			
ALTN. NO			
DATE			
DRAWN			
CHECKED			
PASSED			
PROCESS SPEC. N°		PT8	
PART N°		RT 035 D4	
ALL PARTS MUST BEAR OUR PART N° DATE LETTER & MAKERS' TRADE MARK			

E 58-308/2(3)  
 1200-3-15

QT 035 05	SPRING PIN	MS	Nº 7	
PART Nº	DESCRIPTION	MTL	SPEC.	Nº PER ASSY.
⊕ MACHINED ALL OVER f G MACHINED GROUND	LIMITS TO NEWALL STANDARDS B FOR HOLES P PUSH FIT X RUNNING FIT F FORCE FIT D DRIVING FIT Y " "	DIMENSIONS WITHOUT LIMITS TO BE IN ACCORDANCE WITH L.T.E. DATA SHEET DSI		

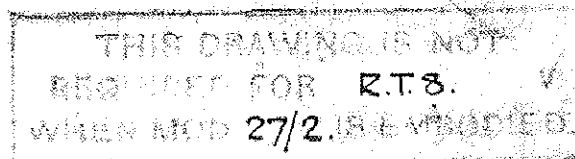


5

				TITLE <b>SPRING PIN - SPEEDOMETER CASING</b>			
				ISSUE NO ALTN. NO DATE DRAWN CHECKED PASSED ISSUE NO ALTN. NO DATE DRAWN CHECKED PASSED			
				1 2 3 M-10-45 A.H.G. H 11-10-45 A.H.G. H 11-10-45 A.H.G. H			
				PROCESS SPEC. NO PART NO RT 035 D5			
				ALL PARTS MUST BEAR OUR PART NO DATE LETTER & MAKERS TRADE MARK			
RT 035 D5				SPRING PIN			
MS				N° 7			
PART NO				DESCRIPTION			
MACHINED ALL OVER				LIMITS TO NEWALL STANDARDS			
MACHINED				B FOR HOLES P PUSH FIT X RUNNING FIT			
GROUND				F FORCE FIT D DRIVING FIT Y " "			
DIMENSIONS WITHOUT				RT 3			
LIMITS TO BE IN				RT 035 DI			
ACCORDANCE WITH L.T.E.				TYPE			
DATA SHEET DSI				ASSD.ON			
				TYPE			
				ASSD.ON			

B-58/309/2/3  
13200-3-45

RT 035 D6.



6 16 SWG

D.ON	TYPE	ASSD.ON
1	1	1
2	2	2
3	3	3
4	4	4
5	5	5
6	6	6
7	7	7
8	8	8
9	9	9
10	10	10
11	11	11
12	12	12
13	13	13
14	14	14
15	15	15
16	16	16
17	17	17
18	18	18
19	19	19
20	20	20
21	21	21
22	22	22
23	23	23
24	24	24
25	25	25
26	26	26
27	27	27
28	28	28
29	29	29
30	30	30
31	31	31
32	32	32
33	33	33
34	34	34
35	35	35
36	36	36
37	37	37
38	38	38
39	39	39
40	40	40
41	41	41
42	42	42
43	43	43
44	44	44
45	45	45
46	46	46
47	47	47
48	48	48
49	49	49
50	50	50
51	51	51
52	52	52
53	53	53
54	54	54
55	55	55
56	56	56
57	57	57
58	58	58
59	59	59
60	60	60
61	61	61
62	62	62
63	63	63
64	64	64
65	65	65
66	66	66
67	67	67
68	68	68
69	69	69
70	70	70
71	71	71
72	72	72
73	73	73
74	74	74
75	75	75
76	76	76
77	77	77
78	78	78
79	79	79
80	80	80
81	81	81
82	82	82
83	83	83
84	84	84
85	85	85
86	86	86
87	87	87
88	88	88
89	89	89
90	90	90
91	91	91
92	92	92
93	93	93
94	94	94
95	95	95
96	96	96
97	97	97
98	98	98
99	99	99
100	100	100

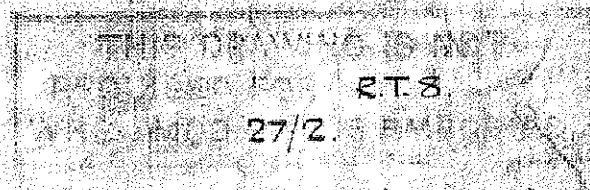
ISSUE 2. ADVICE N° B.T.3  
NOTE ADDED RE THIS  
DEC IS NOT READ

ADVICE NO BTB/2.

[illegible]

E 58/309/2(5)  
3200-3-45

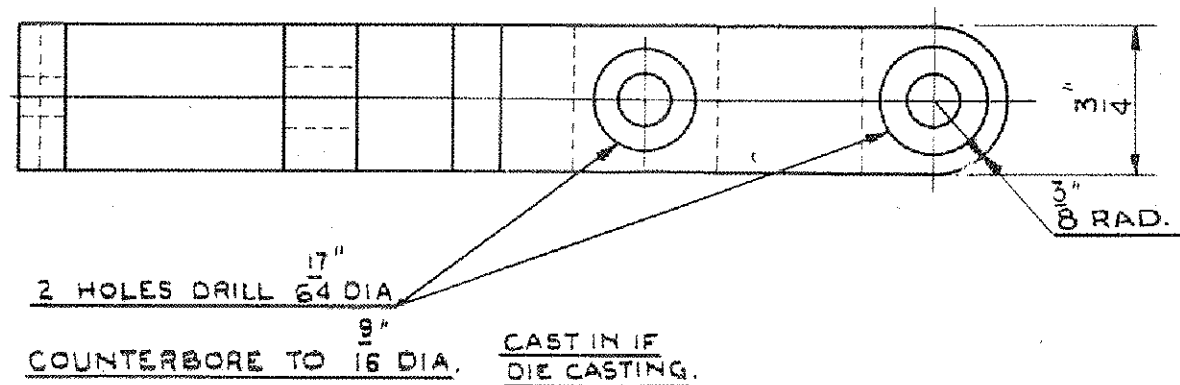
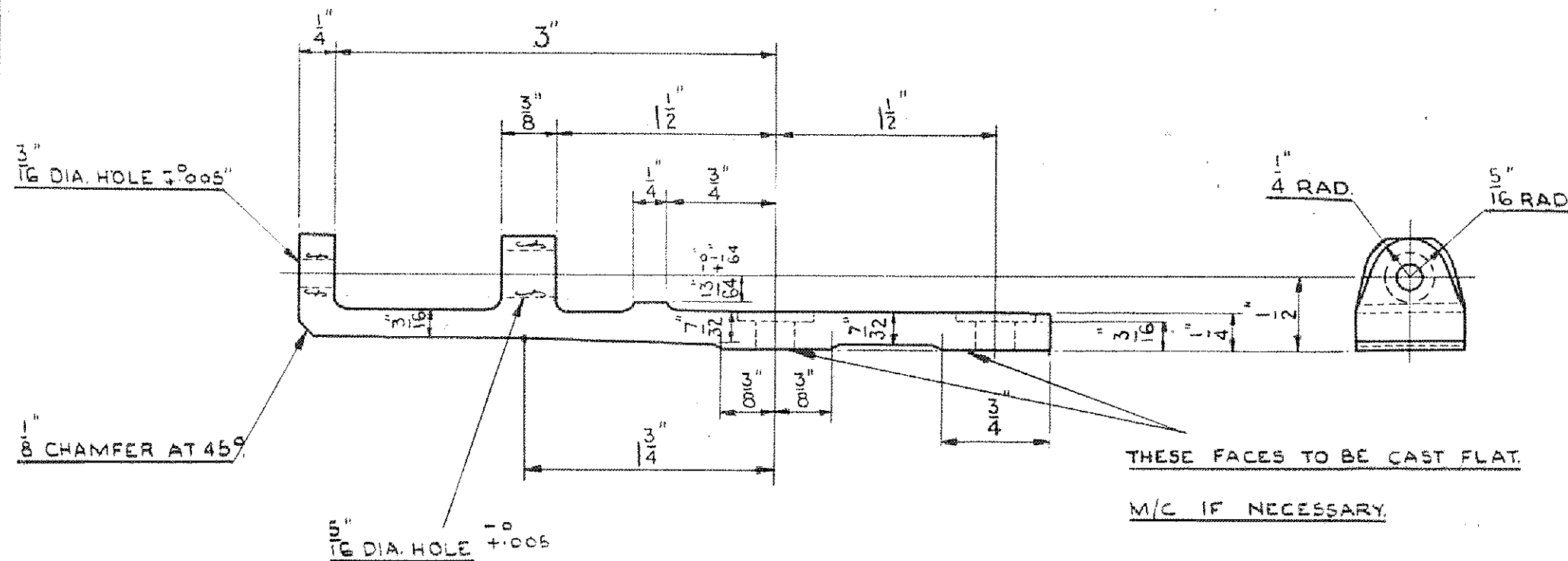
RT 035 D8  
PART NO  
MACHINED  
ALL OVER  
MACHINED  
GROUND



BT, 8/2, ADVISE NO

						TITLE SPRING PIN - HINGE ARM							
						ISSUE NO ALTN. NO. DATE DRAWN CHECKED PASSED				PROCESS SPEC. N° PTB			
						1 MOD 27/2 31.12.45 A.H.G. <i>[Signature]</i> <i>[Signature]</i>				PART N° RT 035 D8			
RT 035 D8      SPRING PIN      MS. N°7						ISSUE NO ALTN. N°9 DATE DRAWN CHECKED PASSED				ALL PARTS MUST BEAR OUR PART N° DATE LETTER & MAKERS' TRADE MARK			
PART N°		DESCRIPTION		MTL. SPEC.		NO PER ASSY.							
⊕ MACHINED f ALL OVER G MACHINED GROUND		LIMITS TO NEWELL STANDARDS		DIMENSIONS WITHOUT LIMITS TO BE IN ACCORDANCE WITH L.T.E. DATA SHEET DS1		RT3		RT 035 DI					
		B FOR HOLES P PUSH FIT X RUNNING FIT F FORCE FIT D DRIVING FIT Y " "				TYPE		ASSD.ON		TYPE		ASSD.ON	

DRAWING NOT TO BE SCALED



THIS DRAWING IS NOT  
REQUIRED FOR RT3  
WHEN MOD.36 IS EMBODIED

2. SAND OR  
DIE CASTING.

# ALTERATIONS

ISSUE 2.  
ORG. TRACED  
WITHOUT  
ALTERATION.

ISSUE 3  
NOTE ADDED,  
THIS ORG. IS NOT  
REQD. ETC.

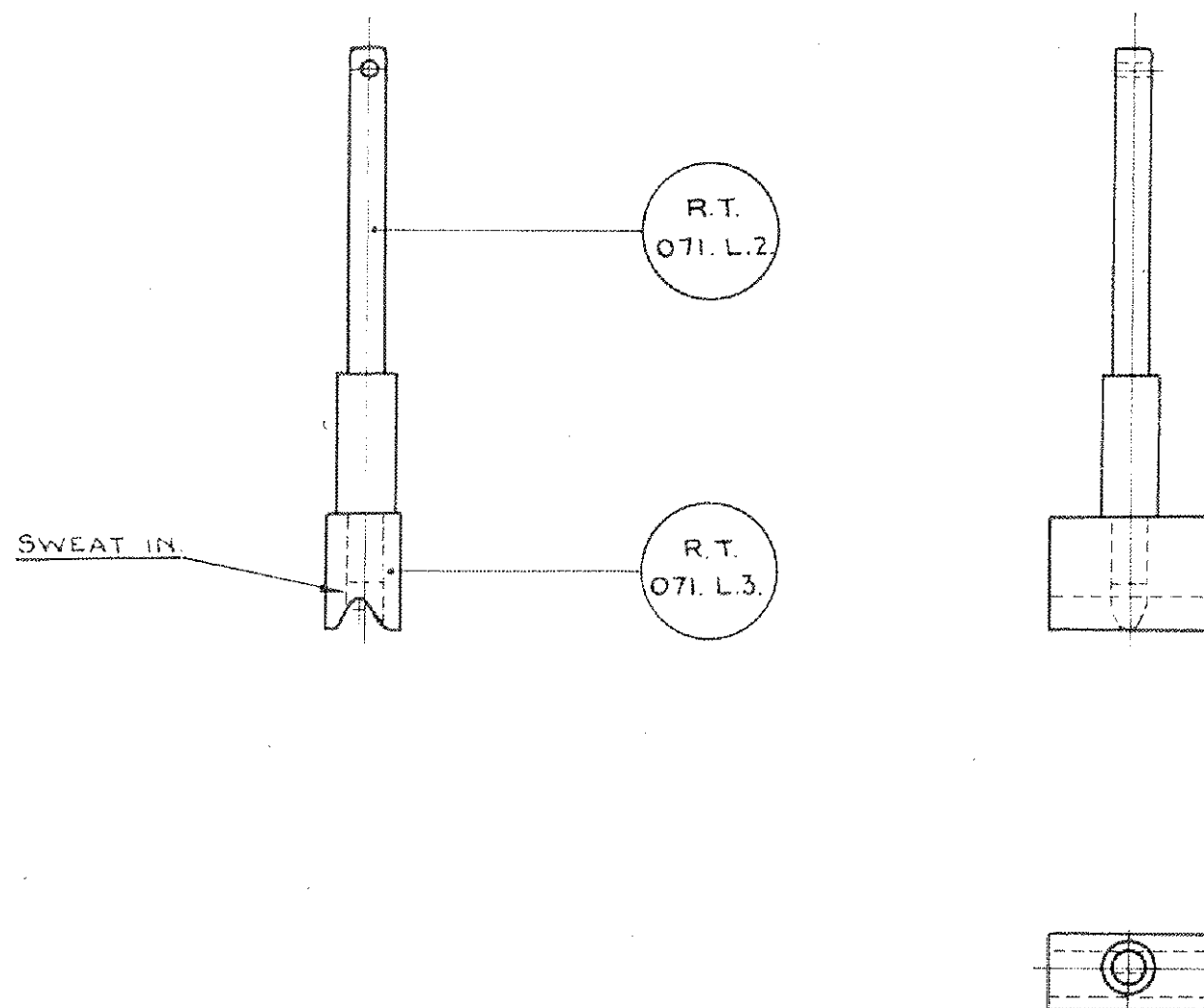
ISSUE 4.  
IN NOTE "ORG. IS REQD"  
MOD.36 WAS 11

ISSUE 5.  
PROCESS SPEC  
ADDED.

TITLE					PLUNGER BRACKET.	
ISSUE NO	1	2	3	4	5	
ALTN. NO		Mod I	Mod II	MOD.36	1A	
DATE	20.2.46	5.4.46	6.6.47	23.10.47	5.7.49	
DRAWN	J.M.		N.S.	CL	RWH	
CHECKED	F.H.H.		CL	CL	CL	
PASSED						
ISSUE NO						
ALTN. NO						
DATE						
DRAWN						
CHECKED						
PASSED						
PROCESS SPEC. NO					PT. 6C	
PART NO					R.T. 070. L.2.	
ALL PARTS MUST BEAR OUR PART NO					DATE LETTER & MAKER'S TRADE MARK	



DRAWING NOT TO BE SCALED



\* SEE SEPARATE DRG.

THIS DRAWING IS NOT  
REQUIRED FOR RT3  
WHEN MOD 36 IS INCORPORATED.



ALTERATIONS

ISSUE 2.  
DRG. TRACED  
WITHOUT ALTER.

ISSUE 3.  
NOTE ADDED,  
THIS DRG. IS NOT  
REQD ETC.

ISSUE 4  
IN NOTE "DRG IS  
REQD MOD 36 WAS II.

TITLE					PLUNGER ASSEMBLY.			
RT. 071. L.3.	PLUNGER HEAD	*	/	1.	ISSUE NO	1.	2.	3.
RT. 071. L.2.	PLUNGER SPINDLE	*	/	1.	ALTN. NO	-	Mod I	Mod II
RT. 071. L.1.	PLUNGER ASSEMBLY.	/	/	/	DATE	20.2.46	5.4.46	6.6.47
PART NO	DESCRIPTION	MTL	SPEC.	NO PER ASSY.	DRAWN	J.M.	H.S.	R.K.
MACHINED ALL OVER	LIMITS TO NEWELL STANDARDS	DIMENSIONS WITHOUT LIMITS TO BE IN ACCORDANCE WITH L.P.T.B. DATA SHEET DSI			CHECKED	F.R.H.	dlr	CL
MACHINED	B FOR HOLES P PUSH FIT X RUNNING FIT	TYPE			PASSED	dy	dy	dy
GROUND	F FORCE FIT D DRIVING FIT Y " "	RT.3.	RT.070.L.I.		ISSUE NO			
		TYPE	ASSD.ON	TYPE	ALTN. NO			
					DATE			
					DRAWN			
					CHECKED			
					PASSED			

PROCESS SPEC. NO. CADMIUM PLATE.

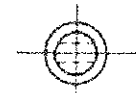
PART NO  
R.T. 071. L.1.

ALL PARTS MUST BEAR OUR PART NO  
DATE LETTER & MAKER'S TRADE MARK



583423  
242 245

RADIUSED



ISSUE 2.  
DRG TRACED  
WITHOUT  
ALTERATION

ISSUE 3  
NOTE ADDED.  
THIS ONE IS NOT  
READY YET.

ISSUE 4.  
IN NOTE "ORG IS REQ"  
MOD 36 WAS 11

ISSUE NO	1	2	3	4
ALTN. NO	-	MOD. I	MOD. II	MOD. 36
DATE	20-2-46	27-3-46	6-6-47	23-10-47
DRAWN	Jm		HS	
CHECKED	F.R.H.			
PASSED	ch	ch	ch	ch
ISSUE NO				
ALTN. NO				
DATE				
DRAWN				
CHECKED				
PASSED				

PROCESS SPEC. NR

PART N°  
R.T. 071. L.2.

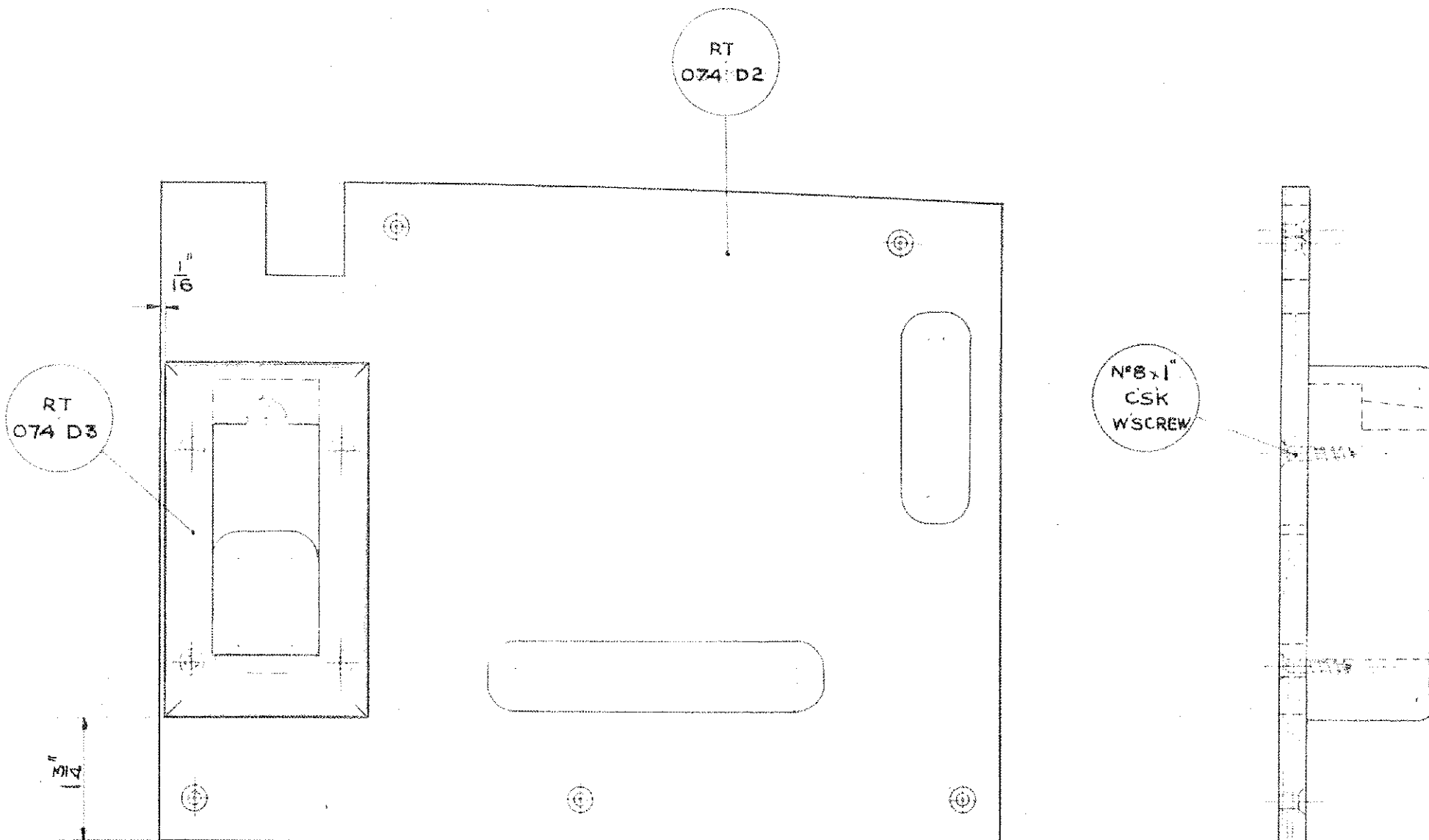
ALL PARTS MUST BEAR OUR PART NO.  
DATE LETTER & MAKER'S TRADE MARK

DEPARTMENT OF THE CHIEF ENGINEER (BUSES & COACHES)  
L.T.E. CHISWICK WORKS, LONDON, W.4.

DRAWING NOT TO BE SCALED

ALTERATIONS

ISSUE 2. ADVISE  
BT3  
NOTE ADDED RE  
DRG NOT RECD  
ETC.  
ADV. NO BT.8/2



THIS DRAWING IS NOT  
REQUIRED FOR RT3  
WHEN MOD. 27/2 IS EMBODIED.

\* SEE SEPARATE DRG.

TITLE						PLY PANEL ASSY. FOR SWITCH BOX									
RT074 D3		N°8 x 1" CSK. W'SCREW		4		ISSUE NO		1		2		PROCESS SPEC. NO			
RT074 D2		STARTER SWITCH BLK		1		ALTN. NO		5-10-46		12-4-45		PART NO			
RT074 D1		PLY PANEL		1		DATE		ADD		12-4-45		RT 074 D1			
PART NO		DESCRIPTION		MTL		SPEC.		NO PER ASSY.		CHECKED		ALL PARTS MUST BEAR OUR PART NO			
⊕		LIMITS TO NEWELL STANDARDS		DIMENSIONS WITHOUT		RT 3		RT000DI		PASSED		DATE LETTER & MAKER'S TRADE MARK			
f		B FOR HOLES P PUSH FIT X RUNNING FIT		LIMITS TO BE IN		TYPE		ASSD.ON		DATE					
G		F FORCE FIT D DRIVING FIT Y " "		ACCORDANCE WITH L.T.E.		TYPE		ASSD.ON		DRAWN					
				DATA SHEET DSI						CHECKED					
										PASSED					

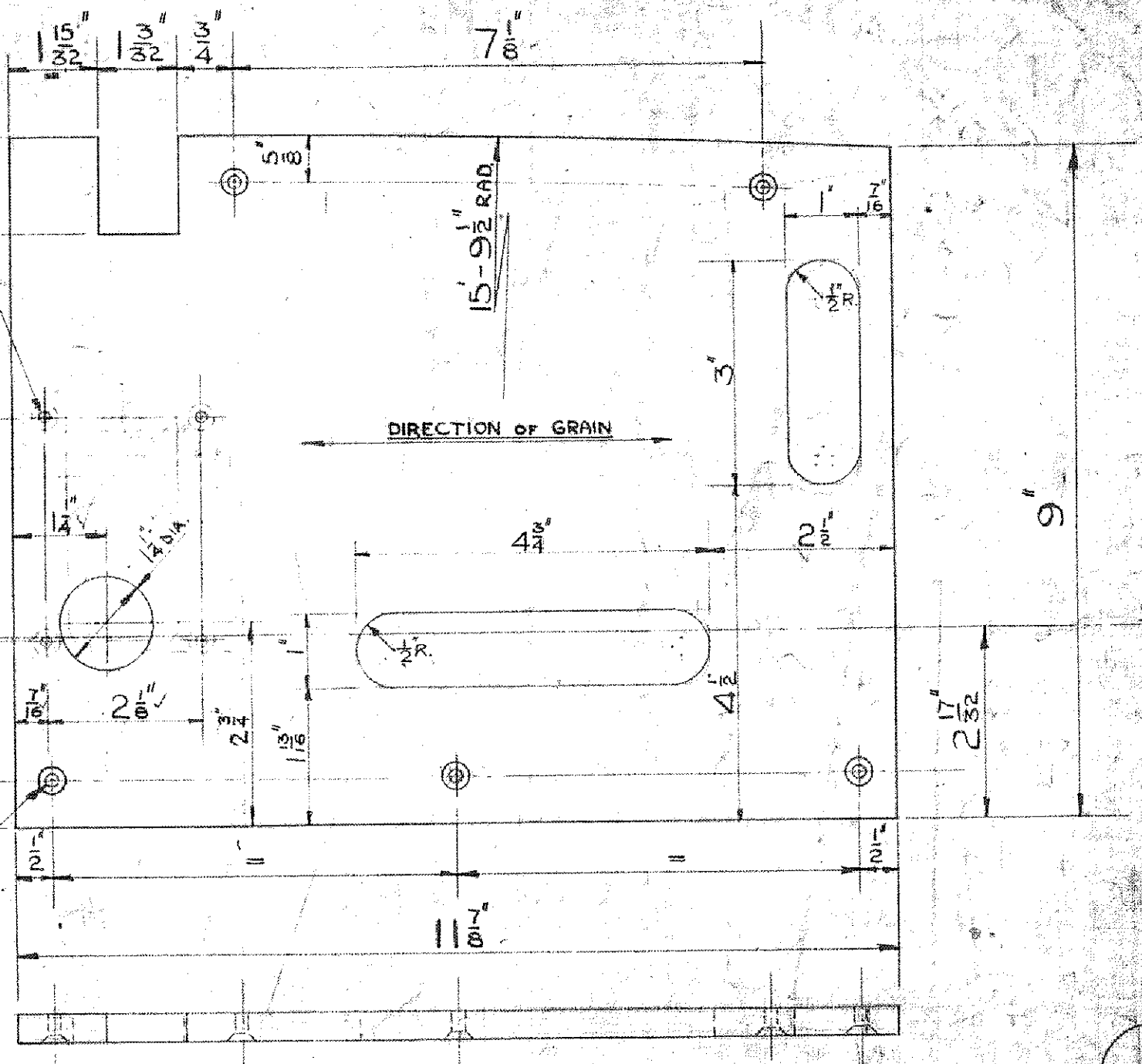
DEPARTMENT OF THE CHIEF ENGINEER (GUSES & COACHES)  
L.T.E. CHIEWICK WORKS, LONDON, W.4.

DRAWING NOT TO BE SCALED

4 HOLES  $\frac{11}{64}$  DIA. CSK OTHER SIDE  $\frac{11}{32}$  DIA. FOR N° 8 WSCREWS

5 HOLES  $\frac{11}{64}$  DIA. CSK  $\frac{11}{32}$  DIA. X90° FOR N° 8 WOODSCREWS

ALTERATION UNDER ISSUE 2  
CAN BE INTRODUCED PRIOR  
TO INTRODUCTION OF MOD 27/1 ✓



ALTERATIONS

ISSUE 2  
PART NO. WAS  
RT001 D33  
CANCELLED

ISSUE 1  
PART RE-INTRODUCED  
UNDER RT074 D2

ISSUE 2. MOD 27/1  
1/4" DIA. HOLE  
REPLACES RECTANGULAR  
HOLE. DIMS 2 3/8" x 2"  
1 1/2" x 1/4" & 3/8" DELETED  
NOTE RE ALTERATION  
UNDER ISSUE 2  
ADDED

ADVISE NO. 8T.8/1.

ISSUE 3  
1/2" RADS. AT SLOT  
ENDS WERE 3/8" R.

RT074 D2 PLY PANEL

PART NO	DESCRIPTION
RT074 D2	PLY PANEL

BIRCH  
PLY  
MATERIAL SPEC. NO. 100  
ASSY. NO. 100  
RTS AFTER RT001 D1  
MOD 27/1 SHT 2  
RT3 BEFORE RT074 D1  
MOD 27/1

RTS AFTER RT001 D1  
MOD 27/1 SHT 2  
RT3 BEFORE RT074 D1  
MOD 27/1

TYPE ASSD ON TYPE ASSD ON

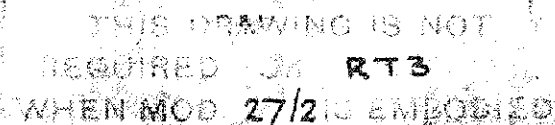
TITLE PLY PANEL FOR SWITCH BOX

ISSUE NO	1	2	1	2	3
DATE	28.8.46	4.10.46	10.10.46	3.4.48	8.11.51
DRAWN	ABD	ABD	ABD	LEP	JGC
CHECKED					
PASSED					
ISSUE NO					
ALTN NO					
DATE					
DRAWN					
CHECKED					
PASSED					

PROCESS SPEC. P.T.2A  
PART NO  
RT 074 D2

E.58/309/2.3)  
2000. 4. 46.

R.T. 074. D.3.  
PART N°  
⊕ MACHINED  
f ALL OVER  
g MACHINED  
GROUND



3.

ADVICE NO BT. 8/2.

[illegible]